
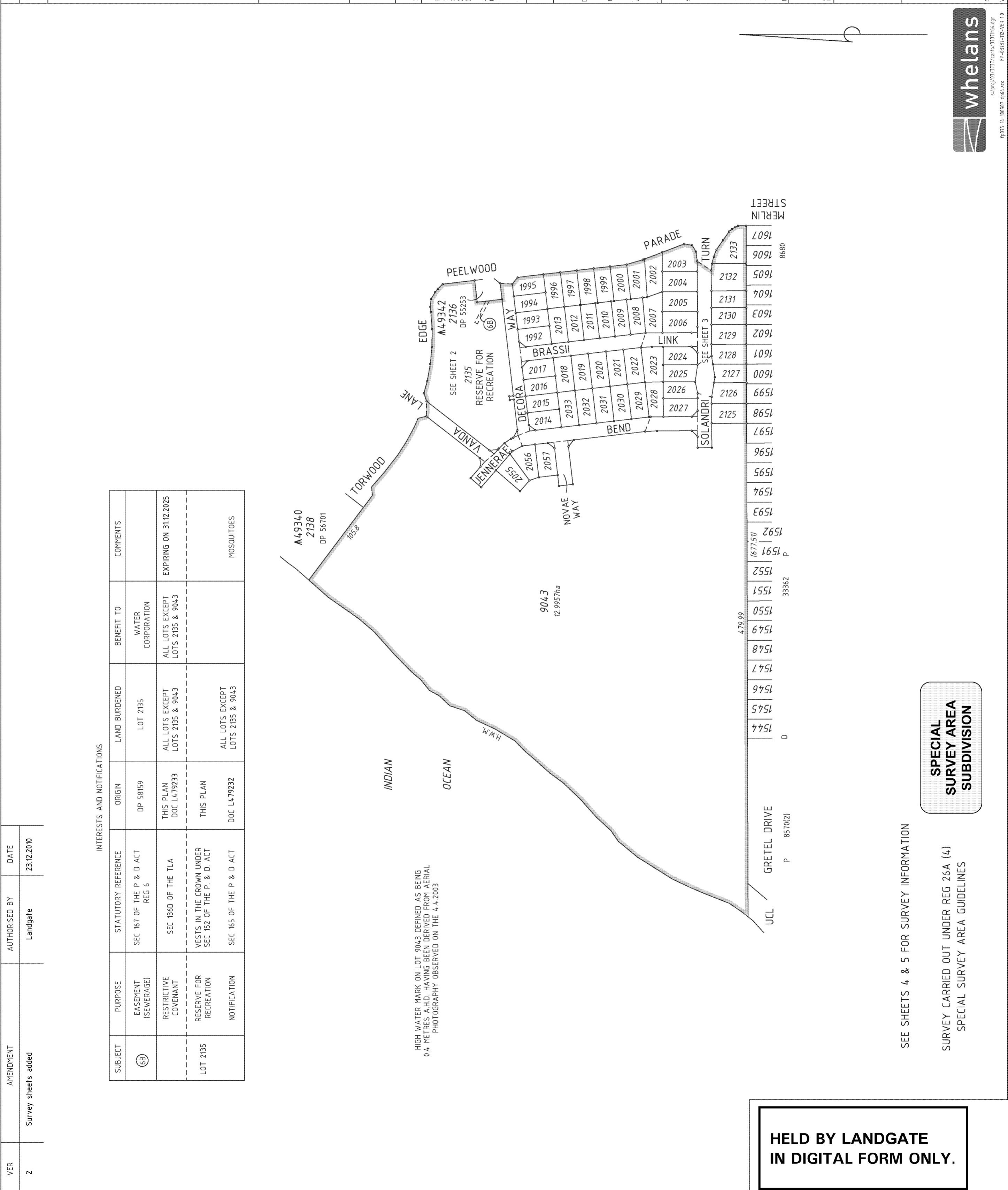


TYPE	FREEHOLD
PURPOSE	SUBDIVISION
PLAN OF	
<b>LOTS 1992-2033, 2055-2057, 2125-2133, 2135, 9043, ROADS &amp; RESTRICTIVE COVENANT</b>	
DISTRICT	MURRAY
TOWNSITE	
DPI FILE	
LOCAL AUTHORITY	CITY OF MANDURAH
LOCALITY	HALLS HEAD
INDEX	ON SEE SMART PLAN
FIELD BOOK	71300 98772 (SAM 2460) (SAM 3920)
SSA YES/NO	
FORMER TENURE	LOT 9039 DP 58159 C/T 2685/700
SCALE	1:2500 AT A2 SIZE ALL DISTANCES ARE IN METRES
SURVEYOR'S CERTIFICATE	Reg 5A SURVEYOR'S CERTIFICATE - Complete
L. LAURENCE JOHN GATTI	
I hereby certify that this compiled plan is a correct and accurate representation of the survey and for the purposes of the relevant law in relation to which it is lodged.	
Licensed Surveyor	WHELAN'S (WA) PTY LTD (100) 9244 5751 www.whelans.com.au
DATE	15-Nov-10
TYPE OF VALIDATION	WESTERN AUSTRALIAN PLANNING COMMISSION
FULL AUDIT	FILE 139818
LEGAL COMPONENT	G FONG
DOCKET PLAN/ID	416-2010/03
CERTIFIED CORRECT	15.12.2010
ISSUED UNDER S 163 P & D ACT 2005	
ASSESS No.	7875645
I.S.C.	459-2010
F.S.C.	
DATE	3-Feb-2011
IN ORDER FOR DEALINGS	
SUBJECT TO	Sec's 152, 165 & 168(1)(2) of P & D ACT Sec. 136D of TLA
FOR INSPECTOR OF PLANS & SURVEYS / AUTHORIZED LAND OFFICER	APPROVED
DATE	3-Feb-2011
REG 26A (4)	
INSPECTOR OF PLANS & SURVEYS / AUTHORIZED LAND OFFICER	
DATE	3-Feb-2011
 <b>Landgate</b> Western Australian Land Information Authority	
DEPOSITED PLAN	
69410	
SHEET	1 OF 5
VERSION	2



INTERESTS AND NOTIFICATIONS						
SUBJECT	PURPOSE	STATUTORY REFERENCE	ORIGIN	LAND BURDENED	BENEFIT TO	COMMENTS
68	EASEMENT (SEWERAGE)	SEC 167 OF THE P & D ACT REG 6	DP 58159	LOT 2135	WATER CORPORATION	
	RESTRICTIVE COVENANT	SEC 136D OF THE TLA	THIS PLAN DOC L479233	ALL LOTS EXCEPT LOTS 2135 & 9043	ALL LOTS EXCEPT LOTS 2135 & 9043	EXPIRING ON 31.12.2025
LOT 2135	RESERVE FOR RECREATION	VESTS IN THE CROWN UNDER SEC 152 OF THE P. & D. ACT	THIS PLAN			
	NOTIFICATION	SEC 165 OF THE P & D ACT	DOC L479232	ALL LOTS EXCEPT LOTS 2135 & 9043		MOSQUITOES

**SPECIAL SURVEY AREA SUBDIVISION**

SEE SHEETS 4 & 5 FOR SURVEY INFORMATION  
 SURVEY CARRIED OUT UNDER REG 26A (4)  
 SPECIAL SURVEY AREA GUIDELINES

**HELD BY LANDGATE  
 IN DIGITAL FORM ONLY.**

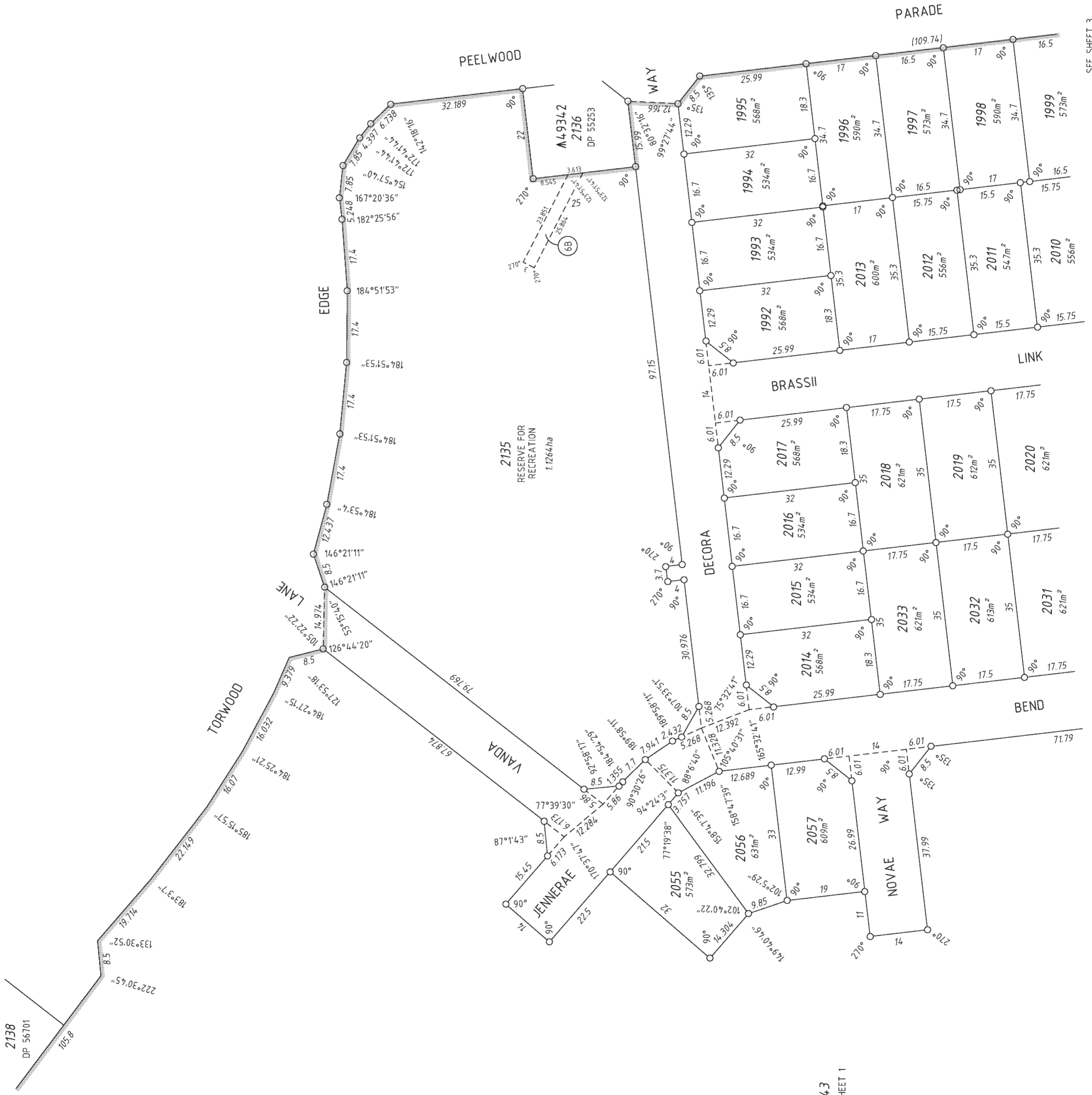


s/p/93/3777/Can/93/2134-5p  
 FP-0331-10-VER 1.0  
 (p075-14-00001-0064-ax)

HELD BY LANDGATE  
IN DIGITAL FORM ONLY.

FOR HEADING SEE SHEET 1  
FOR INTERESTS AND NOTIFICATIONS SEE SHEET 1

SEE SHEET 1  
A49340  
2138  
DP 56701



904.3  
SEE SHEET 1

SEE SHEET 3

SEE SHEET 3

SEE SHEET 3



SCALE: 1:750 AT A2 SIZE  
ALL DISTANCES ARE IN METRES



Landgate  
Western Australian Land Information Authority

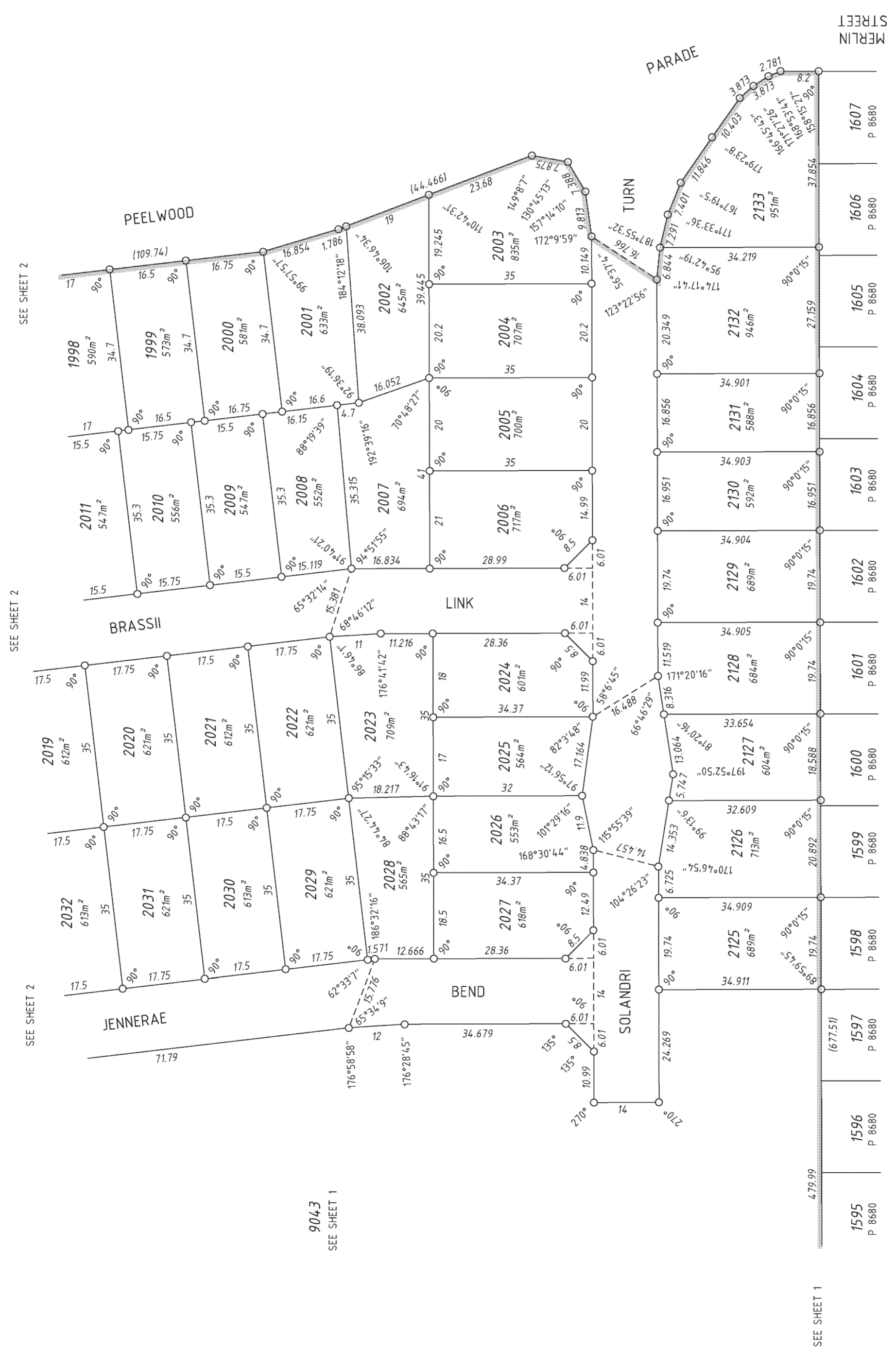
DEPOSITED PLAN  
69410

APPROVED BY  
WESTERN AUSTRALIAN PLANNING COMMISSION

SHEET 2 OF 5  
VERSION 2

**HELD BY LANDGATE  
IN DIGITAL FORM ONLY.**

FOR HEADING SEE SHEET 1  
FOR INTERESTS AND NOTIFICATIONS SEE SHEET 1



SCALE: 1:750 AT A2 SIZE  
ALL DISTANCES ARE IN METRES  
FP-03737-102-VES. 10  
33770564561910

**Landgate**
  
 Western Australian Land Information Authority

Approved by  
**WESTERN AUSTRALIAN PLANNING COMMISSION**

Deposited under s. 136 P. 0 ACT 2005  
 DATE: .....

SHEET 3 OF 5  
 VERSION 2





# P69410

<i>Lot Number</i>	<i>Part Register Number</i>	<i>Section Sheet Number</i>	<i>Lot Number</i>	<i>Part Register Number</i>	<i>Section Sheet Number</i>
1992	2761/642	1	1993	2761/643	1
1994	2761/644	1	1995	2761/645	1
1996	2761/646	1	1997	2761/647	1
1998	2761/648	1	1999	2761/649	1
2000	2761/650	1	2001	2761/651	1
2002	2761/652	1	2003	2761/653	1
2004	2761/654	1	2005	2761/655	1
2006	2761/656	1	2007	2761/657	1
2008	2761/658	1	2009	2761/659	1
2010	2761/660	1	2011	2761/661	1
2012	2761/662	1	2013	2761/663	1
2014	2761/664	1	2015	2761/665	1
2016	2761/666	1	2017	2761/667	1
2018	2761/668	1	2019	2761/669	1
2020	2761/670	1	2021	2761/671	1
2022	2761/672	1	2023	2761/673	1
2024	2761/674	1	2025	2761/675	1
2026	2761/676	1	2027	2761/677	1
2028	2761/678	1	2029	2761/679	1
2030	2761/680	1	2031	2761/681	1
2032	2761/682	1	2033	2761/683	1
2055	2761/684	1	2056	2761/685	1
2057	2761/686	1	2125	2761/687	1
2126	2761/688	1	2127	2761/689	1
2128	2761/690	1	2129	2761/691	1
2130	2761/692	1	2131	2761/693	1
2132	2761/694	1	2133	2761/695	1
2135	LR 3160/329	1	9043	2761/696	1

# P69410

<i>Lot Number</i>	<i>Part Register Number</i>	<i>Section Sheet Number</i>	<i>Lot Number</i>	<i>Part Register Number</i>	<i>Section Sheet Number</i>
1992	2761/642	2	1993	2761/643	2
1994	2761/644	2	1995	2761/645	2
1996	2761/646	2	1997	2761/647	2
1998	2761/648	2	2011	2761/661	2
2012	2761/662	2	2013	2761/663	2
2014	2761/664	2	2015	2761/665	2
2016	2761/666	2	2017	2761/667	2
2018	2761/668	2	2019	2761/669	2
2032	2761/682	2	2033	2761/683	2
2055	2761/684	2	2056	2761/685	2
2057	2761/686	2	2135	LR 3160/329	2
9043	2761/696	2			

# P69410

<i>Lot Number</i>	<i>Part Register Number</i>	<i>Section Sheet Number</i>	<i>Lot Number</i>	<i>Part Register Number</i>	<i>Section Sheet Number</i>
1999	2761/649	3	2000	2761/650	3
2001	2761/651	3	2002	2761/652	3
2003	2761/653	3	2004	2761/654	3
2005	2761/655	3	2006	2761/656	3
2007	2761/657	3	2008	2761/658	3
2009	2761/659	3	2010	2761/660	3
2020	2761/670	3	2021	2761/671	3
2022	2761/672	3	2023	2761/673	3
2024	2761/674	3	2025	2761/675	3
2026	2761/676	3	2027	2761/677	3
2028	2761/678	3	2029	2761/679	3
2030	2761/680	3	2031	2761/681	3
2125	2761/687	3	2126	2761/688	3
2127	2761/689	3	2128	2761/690	3
2129	2761/691	3	2130	2761/692	3
2131	2761/693	3	2132	2761/694	3
2133	2761/695	3	9043	2761/696	3