



Artists Impression*

Lot 348 | Lochern Road

House and Land Package

Clayfield



WA Housing Centre

Price From \$323,000**

Frontage 10.5m SQM 315sqm

Plus \$15k Settlement Rebate^

- Designer kitchen
- Spacious open-plan living area
- Master bedroom with walk-in robe and ensuite



WA Housing Centre

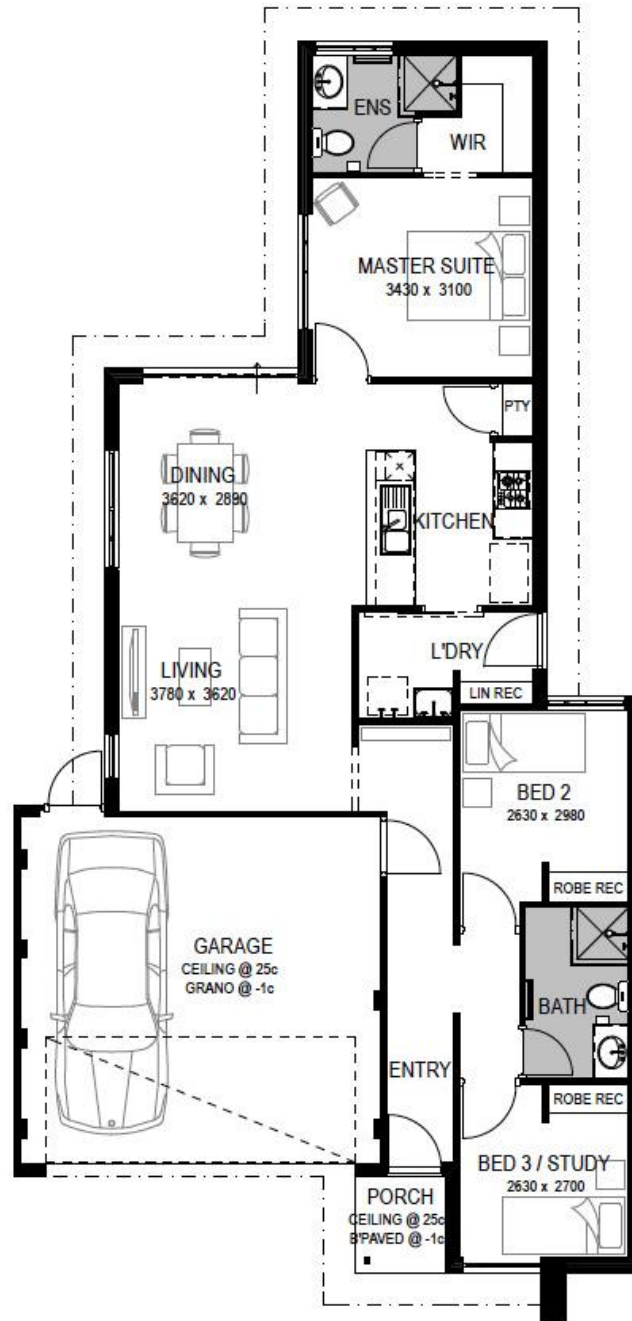
Ask about our Landscaping & Fencing Extras*!**

***See www.one71baldivis.mirvac.com/promotions for the terms and conditions of this offer.

Contact **Alicia Strano** from One71 Baldivis on 0466 353 182 or **Dean Crozier** from WA Housing Centre on 0434 127 599.

One71 Baldivis Sales & Information Centre
Parkville Boulevard
Baldivis WA, 6171, Australia
T + 61 8 9424 9989

www.one71baldivis.mirvac.com



^Terms and conditions apply, see website for details at www.one71baldivis.mirvac.com.

**House and land sold separately. Land sold by Mirvac WA Pty Ltd. Buyers must enter into a separate contract with the builder and the builder is responsible for all matters relating to the building contract and the house. Buyers should review the land and building contracts carefully, obtain independent advice before proceeding and make their own enquiries. Illustration and artist's impressions of buildings, interiors and views are intended to be indicative only and may include upgrade items above standard specifications. Package includes land price, base home price and site works allowance, and is indicatively only and subject to change (including increase). Site works allowance can only be finalised following a survey to be carried out by the builder (at your cost). Other costs and fees are payable in addition to those quoted including transfer/stamp duty, settlement fees, registration fees, legal fees, finance costs, site works, consultants' fees, survey fees, approvals, service connections and variations. Mirvac reserves the right to withdraw or alter any package at any time without notice in its absolute discretion. See one71baldivis.mirvac.com for full terms and conditions. Produced 1 October 2019.