



Price excludes: Fencing, Landscaping, Concrete pavers, Planter boxes, Decking

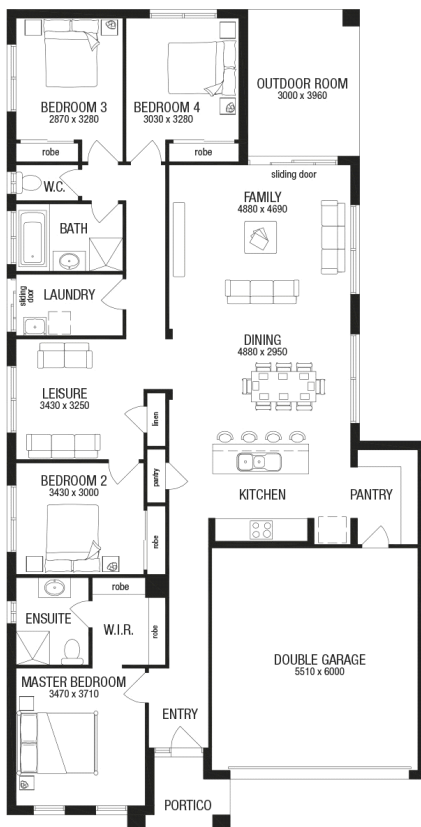
FIXED PRICE

## \$555,000\*

LOT 569 HAYES HILL  
BOULEVARD  
OLIVINE ESTATE  
DONNYBROOK

DELTA 24A  
LUXE FACADE

BLOCK SIZE | 400M<sup>2</sup>



### FIXED PRICE PACKAGE INCLUDES:

THE DELTA 24A WITH LUXE FACADE  
BUILT TO OUR INDUSTRY LEADING  
BASE SPECIFICATIONS AND LAND,  
PLUS:

- ✓ Stainless steel canopy rangehood and oven
- ✓ Stainless steel sink
- ✓ Single lever mixer tap, chrome finish
- ✓ A choice of contemporary tapware and basins
- ✓ 2000mm high semi-frameless shower screen
- ✓ 2400mm ceiling height throughout
- ✓ Sectional garage door
- ✓ Gas ducted heating to living areas and bedroom (excludes 'wet areas' and storage)
- ✓ Concrete roof tiles (choose from builder's category 1 Value range)
- ✓ Lifetime structural guarantee#



**1300 METRICON**  
[www.metricon.com.au](http://www.metricon.com.au)

STEPHANIE SOTO

**FREEDOM**

**m**  
metricon

\*Home and Land Package price correct at time of printing and subject to change without notice. Package price excludes external lighting, telephone service, customer account opening fees, stamp duty on land, legal fees and conveyancing costs including titles and property report. See your Metricon new home advisor for full details of standard inclusions. Land supplied by developer. Land prices and availability are subject to change without notice. All home & land packages are subject to developer approval. #For details on our Lifetime structural guarantee visit [metricon.com.au/terms/structuralguarantee](http://metricon.com.au/terms/structuralguarantee). Newfield Real Estate Pty Ltd ACN 159 312 722, Licence number 028051L. VIC Builder's Licence: CDB-U 52967  
Package Printed Date: 15/01/2019 Price Region: Greenfields

OLIVINE  
by mirvac