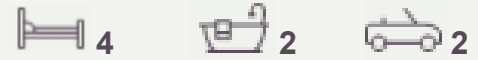




Aspire



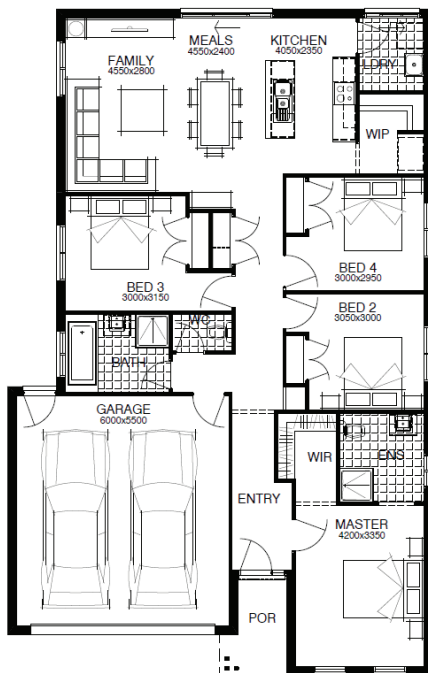
\$477,767*

LOT 537

Olivine Estate

DONNYBROOK

TOTAL AREA	LOT WIDTH	HOUSE
400m ²	12.5m	167.22m ²



- DEVELOPER & COUNCIL REQs
- 3 COAT PAINT APPLICATION
- DARWIN STAGE 1 WATER FILTRATION SYSTEM
- DARWIN AIR FILTER AND GRILLE
- 5X DARWIN CIRCADIAN CAPABLE DOWNLIGHTS TO MASTER BEDROOM
- DARWIN HUB
- SECTIONAL LIFT GARAGE DOOR
- 450MM EAVES TO FACADE WITH 3M RETURN TO DWELLING

Visit our Sales Centre
 1025 Donnybrook Rd, Donnybrook
 Open Monday 1pm - 5pm
 Open Tuesday - Sunday 11am-5pm

Contact us

Maxine Thomson Daniel Lock
 0468 562 215 0499 199 756
 Maxine.Thomson@mirvac.com Daniel.Lock@mirvac.com

OLIVINE.MIRVAC.COM

Important Notice: While this flyer accurately reflects the proposed development at the time this flyer was created, it should be used as a general guide only. In particular, the plans, images, dimensions, sizes and areas, facilities, amenities, infrastructure, the configuration of these and other information contained in this flyer (Project Information) are based on images and information provided to us by builders and others, and may change depending on a range of variable factors including, but not limited to, council building approvals and planning consents, market conditions, finance and government and municipal requirements. As a result, the Project Information is subject to change without notice as the development progresses and we recommend that you confirm the current Project Information at the time you enter into a purchase contract. Mirvac Victoria Pty Ltd does not accept any liability for any reliance upon this flyer.

All Fixed Price Home and Land packages are subject to Developer and Council approval and is based on Simonds standard floor plan with preferred siting (without alterations). Package Price does not include stamp duty, government, legal or bank charges. Community Infrastructure Levy and Asset Protection Permit are not included in pricing and is to be arranged by the client directly with the Developer (if applicable). Any alterations may incur additional charges. Confirm land price and availability prior to purchase. Simonds reserves the right to withdraw or amend pricing, inclusions and promotion at any time without notice. Please refer to the terms and conditions at www.simonds.com.au/terms-and-conditions. This package applies to VIC Price Breaker range only. Please speak with your sales consultant for further details. Pricing is current at 15/02/2019.

Home & land package

OLIVINE
by mirvac



Nicholson



\$499,023*

LOT 537

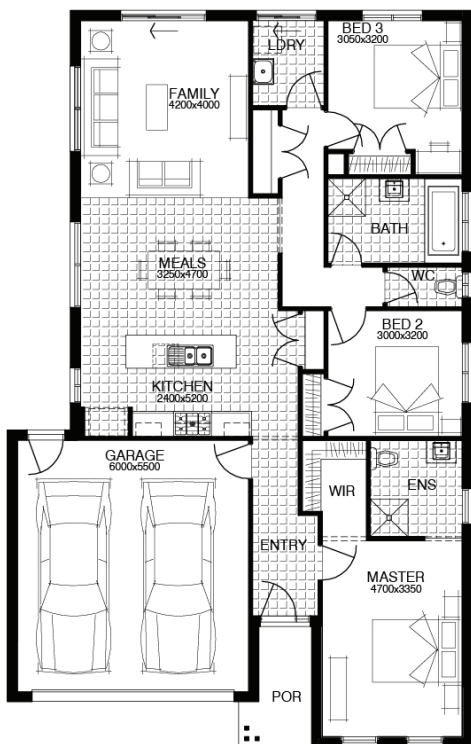
Olivine Estate

DONNYBROOK

TOTAL AREA	LOT WIDTH	HOUSE
400m ²	12.5m	169.82m ²



- DEVELOPER & COUNCIL REQ'S
- WELLNESS - DARWIN ESSENTIALS PACK
- UP TO 40M2 OF 100MM PLAIN CONCRETE PAVING
- 3 COAT PAINT APPLICATION
- SECTIONAL LIFT GARAGE DOOR WITH 2 REMOTES
- BRICK INFILL ABOVE WINDOWS
- FLOORING THROUGHOUT
- TECHNIKA 900MM STAINLESS STEEL APPLIANCES



Visit our Sales Centre
1025 Donnybrook Rd, Donnybrook
Open Monday 1pm - 5pm
Open Tuesday - Sunday 11am-5pm

Contact us

Maxine Thomson Daniel Lock
0468 562 215 0499 199 756
Maxine.Thomson@mirvac.com Daniel.Lock@mirvac.com

OLIVINE.MIRVAC.COM

Important Notice: While this flyer accurately reflects the proposed development at the time this flyer was created, it should be used as a general guide only. In particular, the plans, images, dimensions, sizes and areas, facilities, amenities, infrastructure, the configuration of these and other information contained in this flyer (Project Information) are based on images and information provided to us by builders and others, and may change depending on a range of variable factors including, but not limited to, council building approvals and planning consents, market conditions, finance and government and municipal requirements. As a result, the Project Information is subject to change without notice as the development progresses and we recommend that you confirm the current Project Information at the time you enter into a purchase contract. Mirvac Victoria Pty Ltd does not accept any liability for any reliance upon this flyer.

All Fixed Price Home and Land packages are subject to Developer and Council approval and is based on Simonds standard floor plan with preferred siting (without alterations). Package Price does not include stamp duty, government, legal or bank charges. Community Infrastructure Levy and Asset Protection Permit are not included in pricing and is to be arranged by the client directly with the Developer (if applicable). Any alterations may incur additional charges. Confirm land price and availability prior to purchase. Simonds reserves the right to withdraw or amend pricing, inclusions and promotion at any time without notice. Please refer to the terms and conditions at www.simonds.com.au/terms-and-conditions. This package applies to VIC Express range only. Please speak with your sales consultant for further details. Pricing is current at 15/02/2019.