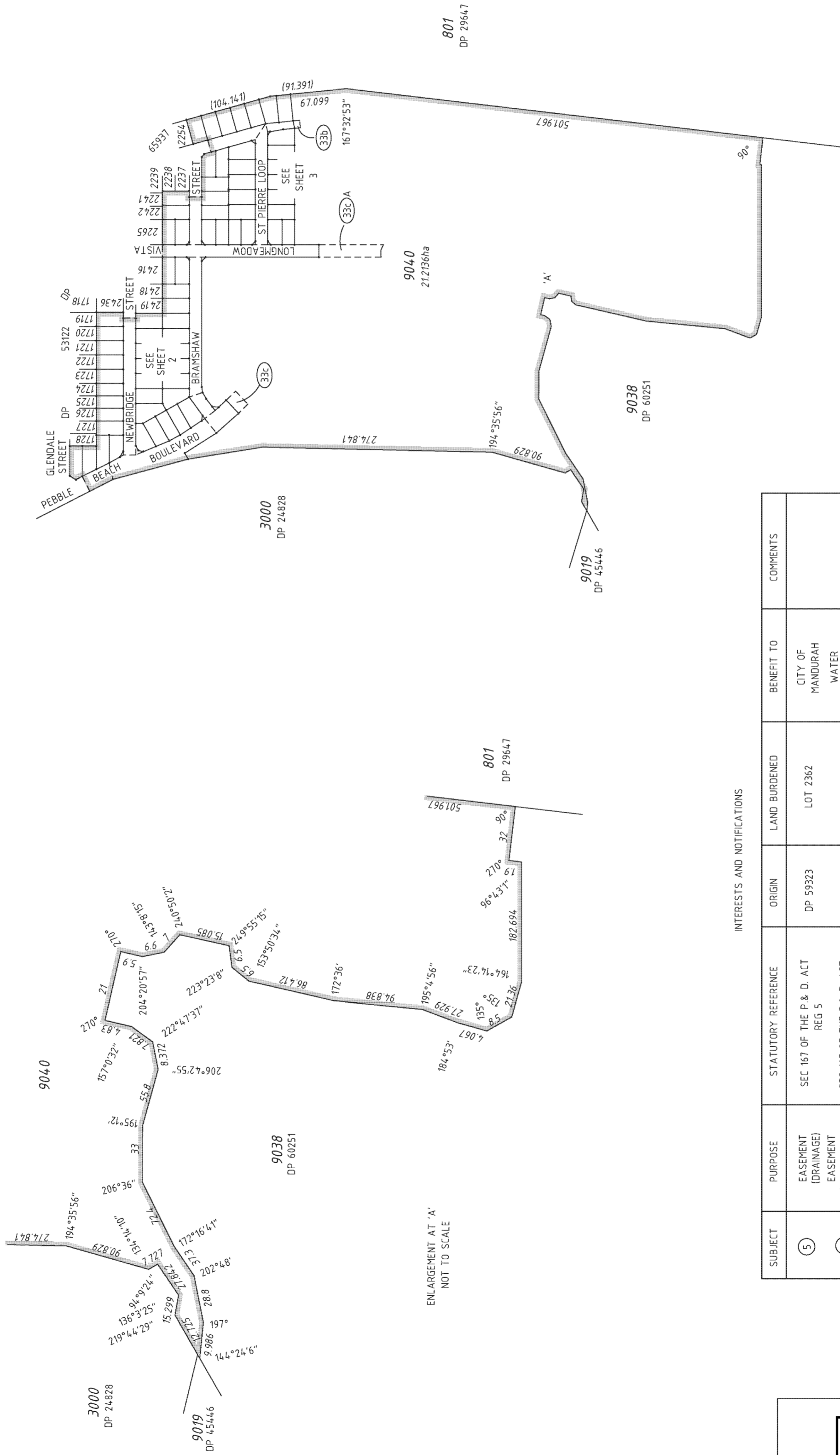


TYPE	FREEHOLD
PURPOSE	SUBDIVISION
PLAN OF	
	<b>LOTS 1729, 2219-2236, 2255-2261, 2266-2273, 2362-2369, 2406-2415, 2420-2435, 9040, ROADS EASEMENTS &amp; RESTRICTIVE COVENANT</b>
DISTRICT	COCKBURN SOUND
TOWNSITE	SSA YES/NB=
DPI FILE	FORMER TENURE LOT 9039 DP 65937 C/T 2735/937
LOCAL AUTHORITY	CITY OF MANDURAH
LOCALITY	MEADOW SPRINGS
INDEX	ON SEE SMART PLAN
FIELD BOOK	
	89766 89767 (SAP 3600) (SAP 3601)
	99401 100460 (SAP 3938) (SAP 3975)
<p>SCALE: 1:4000 AT A2 SIZE ALL DISTANCES ARE IN METRES</p> <p>SURVEYOR'S CERTIFICATE - Reg 54 I, PHILIP GEORGE JONATH hereby certify that this compiled plan (a) is a correct and true representation of the correct representation of the *survey, and for (b) is in accordance with the relevant understandings for the purposes of this plan and that it complies with the relevant written laws in relation to which it is lodged in relation to which it is lodged</p>	
SURVEYING & DRAFTING BY	WHELANS (WA) PTY LTD (081) 94443 1831 www.whelans.com.au
DATE	24-Sep-10
TYPE OF VALIDATION	FULL AUDIT LEGAL/Peter Pressing 15-Oct-2010 FILE 133736
Docket	00422-2010
CERTIFIED CORRECT	16-Oct-2010
ISSUED	28-Oct-2010
DESIGATED UNDER S16 P & D ACT 2005	
ASSESS NO.	7629059
DATE	404-2010
IN ORDER FOR DEALINGS	
SUBJECT TO	Sec. 136D of T.L.A. Sec. 165 & 167 of P&D Act & Sec. 168 (1)(2) of P&D Act
FOR INSPECTOR OF PLANS & SURVEYS / AUTHORIZED LAND OFFICER	DATE 01-Nov-2010
APPROVED	REG 26A (4) 1-Nov-2010
INSPECTOR OF PLANS & SURVEYS / AUTHORIZED LAND OFFICER	DATE
<b>Landgate</b> Western Australian Land Information Authority	
<b>DEPOSITED PLAN</b>  <b>68017</b>	
SHEET	1 OF 5
VERSION	2

**SPECIAL  
SURVEY AREA  
SUBDIVISION**



INTERESTS AND NOTIFICATIONS

SUBJECT	PURPOSE	STATUTORY REFERENCE	ORIGIN	LAND BURDENED	BENEFIT TO	COMMENTS
(5)	EASEMENT (DRAINAGE)	SEC 167 OF THE P & D. ACT REG 5	DP 59323	LOT 2362	CITY OF MANDURAH	
(6)	EASEMENT (SEWERAGE & WATER SUPPLY)	SEC 167 OF THE P & D. ACT REG 6	DP 59323	LOT 2362	WATER CORPORATION	
(8B)	EASEMENT (UNDERGROUND ELECTRIC)	SEC 167 OF THE P & D. ACT REG 8	DP 59323	LOT 2362	ELECTRICITY NETWORKS CORPORATION	
(33b)	EASEMENT (WATER SUPPLY)	SEC 167 OF THE P & D. ACT REG 33b	THIS PLAN	LOT 9040	WATER CORPORATION	
(33c) (33c-A)	EASEMENT (ELECTRICITY SUPPLY)	SEC 167 OF THE P & D. ACT REG 33c	THIS PLAN	LOT 9040	ELECTRICITY NETWORKS CORPORATION	
	RESTRICTIVE COVENANT	SEC 136D OF THE TLA	THIS PLAN DOC L453618	ALL LOTS EXCEPT LOT 9040	ALL LOTS EXCEPT LOT 9040	
	NOTIFICATION	SEC 165 OF THE P & D. ACT	DOC L453617	ALL LOTS EXCEPT LOT 9040	ALL LOTS EXCEPT LOT 9040	MOSQUITOES

SEE SHEETS 4&5 FOR SURVEY INFORMATION

SURVEY CARRIED OUT UNDER REG 26A  
SPECIAL SURVEY AREA GUIDELINES

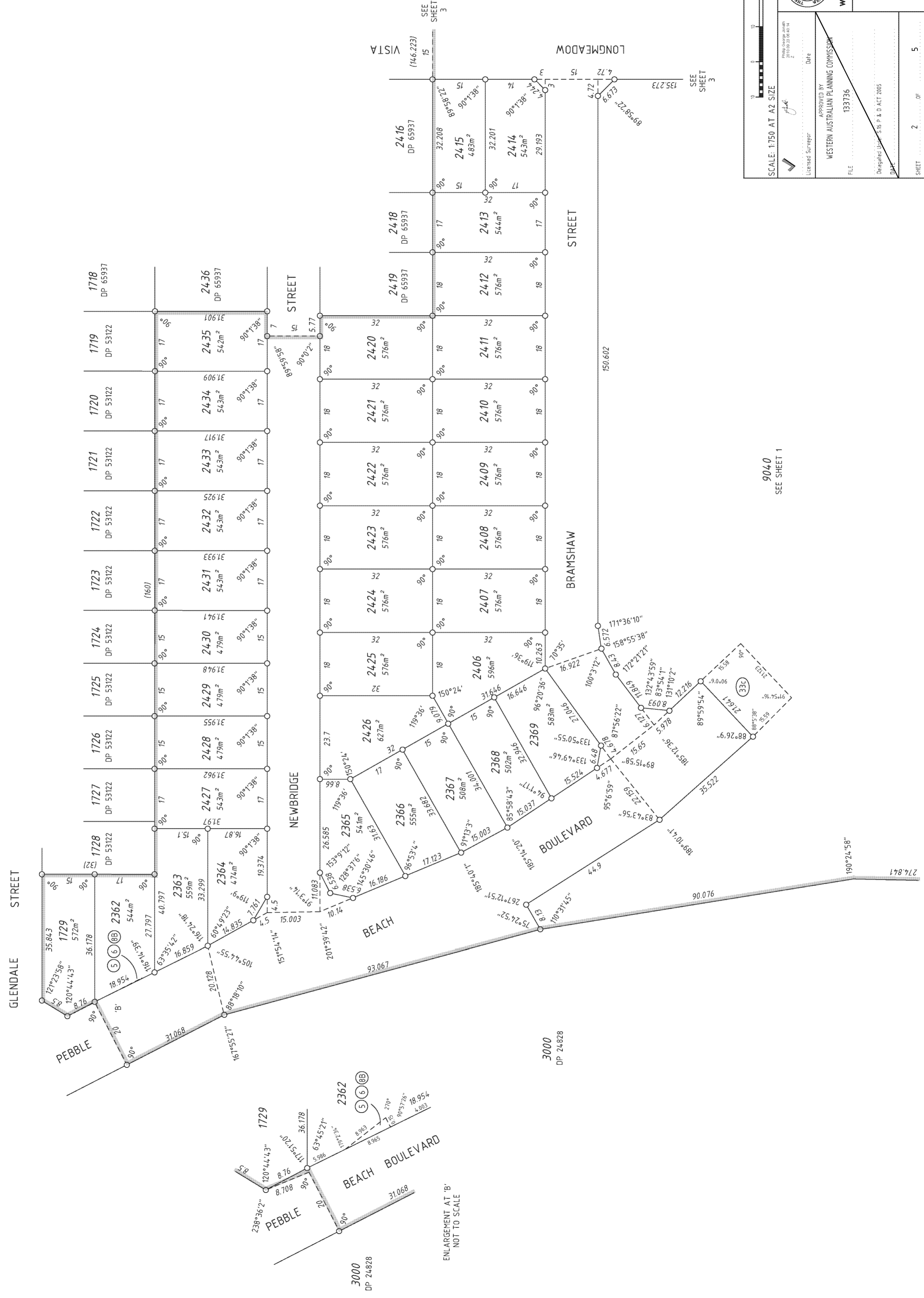
**HELD BY LANDGATE  
IN DIGITAL FORM ONLY.**



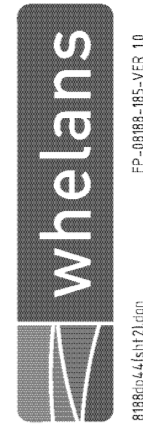
1/272-15-100508-04-C-act IP-08988-05-VES 10

HELD BY LANDGATE  
IN DIGITAL FORM ONLY.

FOR HEADING SEE SHEET 1  
FOR INTERESTS AND NOTIFICATIONS SEE SHEET 1



ENLARGEMENT AT 'B'  
NOT TO SCALE



FP-48188-185-V05.10  
888664461121619

SCALE: 1:750 AT A2 SIZE  
ALL DISTANCES ARE IN METRES

9040  
SEE SHEET 1

APPROVED BY  
WESTERN AUSTRALIAN PLANNING COMMISSION  
1337336

FILE  
1337336

Delegated Under S15 P & D ACT 2005

DATE  
21/11/09 23:04:11

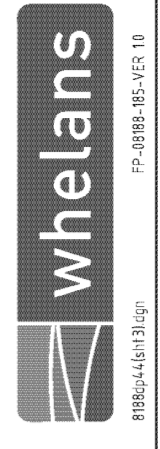
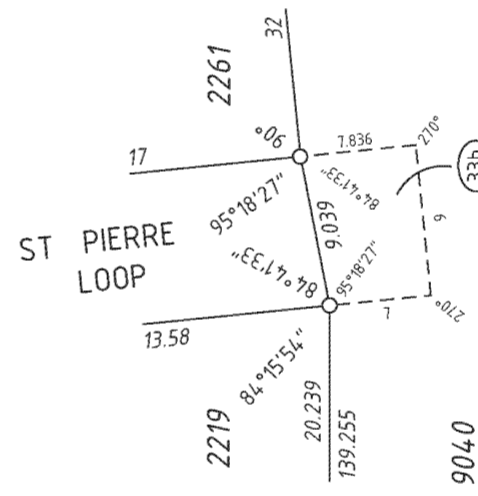
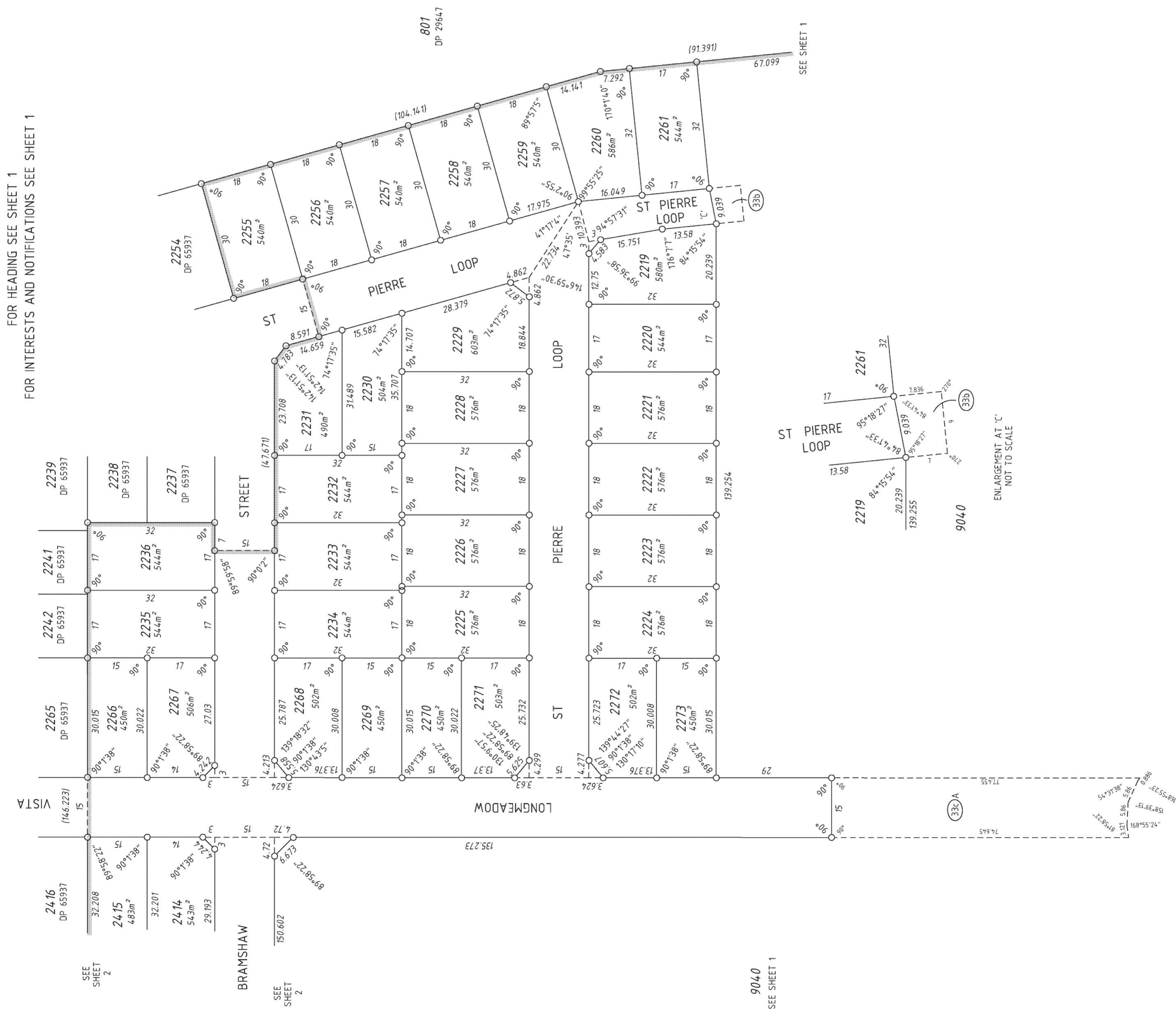
Licensed Surveyor  
Date

DEPOSITED PLAN  
68017

SHEET 2 OF 5  
VERSION 2

**HELD BY LANDGATE  
IN DIGITAL FORM ONLY.**

FOR HEADING SEE SHEET 1  
FOR INTERESTS AND NOTIFICATIONS SEE SHEET 1



88864-461131ign  
FP-08188-185-NER 10



**Landgate**  
Western Australian Land Information Authority

SCALE: 1:750 AT A2 SIZE  
ALL DISTANCES ARE IN METRES

APPROVED BY  
WESTERN AUSTRALIAN PLANNING COMMISSION

FILE: 1337336

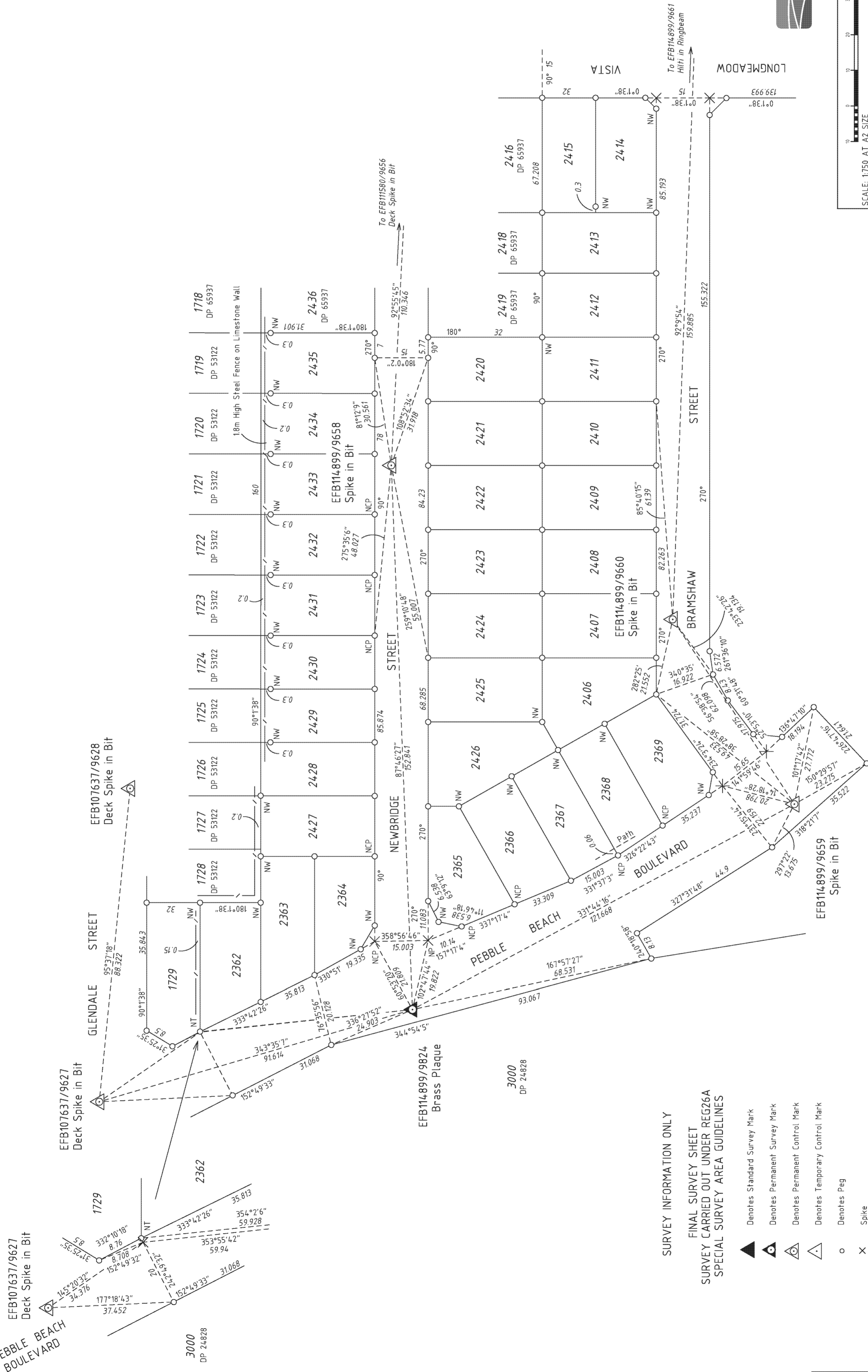
Delegated Under S15 P & D ACT 2005

SHEET 3 OF 5  
VERSION 2

DEPOSITED PLAN  
**68017**

HELD BY LANDGATE  
IN DIGITAL FORM ONLY.

FOR HEADING SEE SHEET 1  
FOR INTERESTS AND NOTIFICATIONS SEE SHEET 1



**SURVEY INFORMATION ONLY**  
FINAL SURVEY SHEET  
SURVEY CARRIED OUT UNDER REG26A  
SPECIAL SURVEY AREA GUIDELINES

- ▲ Denotes Standard Survey Mark
- Denotes Permanent Survey Mark
- ⊙ Denotes Permanent Control Mark
- △ Denotes Temporary Control Mark
- Denotes Peg
- × Spike

NT - Nail in Top of Post    NCP - Nail in Concrete Path    NW - Nail in Wall  
NP - Nail in Brick Paving    NLC - Nail in Limestone Column

THIS SUBDIVISION AT THE TIME OF SURVEY  
MAY CONTAIN RETAINING WALLS WHICH  
ARE ALL LOCATED WITHIN THE HIGH (OR LOW) LOT/S

PROJECT GRID IS PCG 94



8880441616  
FP-08181-05-V05.1.0



9040

REG 54

PHILIP GEORGE JONATHAN

(a) survey, and / or  
(b) calculations from measurements  
(c) delete if inapplicable

underpin for the purposes of this plan and  
that it complies with the relevant written laws  
in relation to which it is lodged

Philip George  
2010.09.29  
0188.52

Licensed Surveyor Date

SHEET 4 OF 5  
VERSION 2



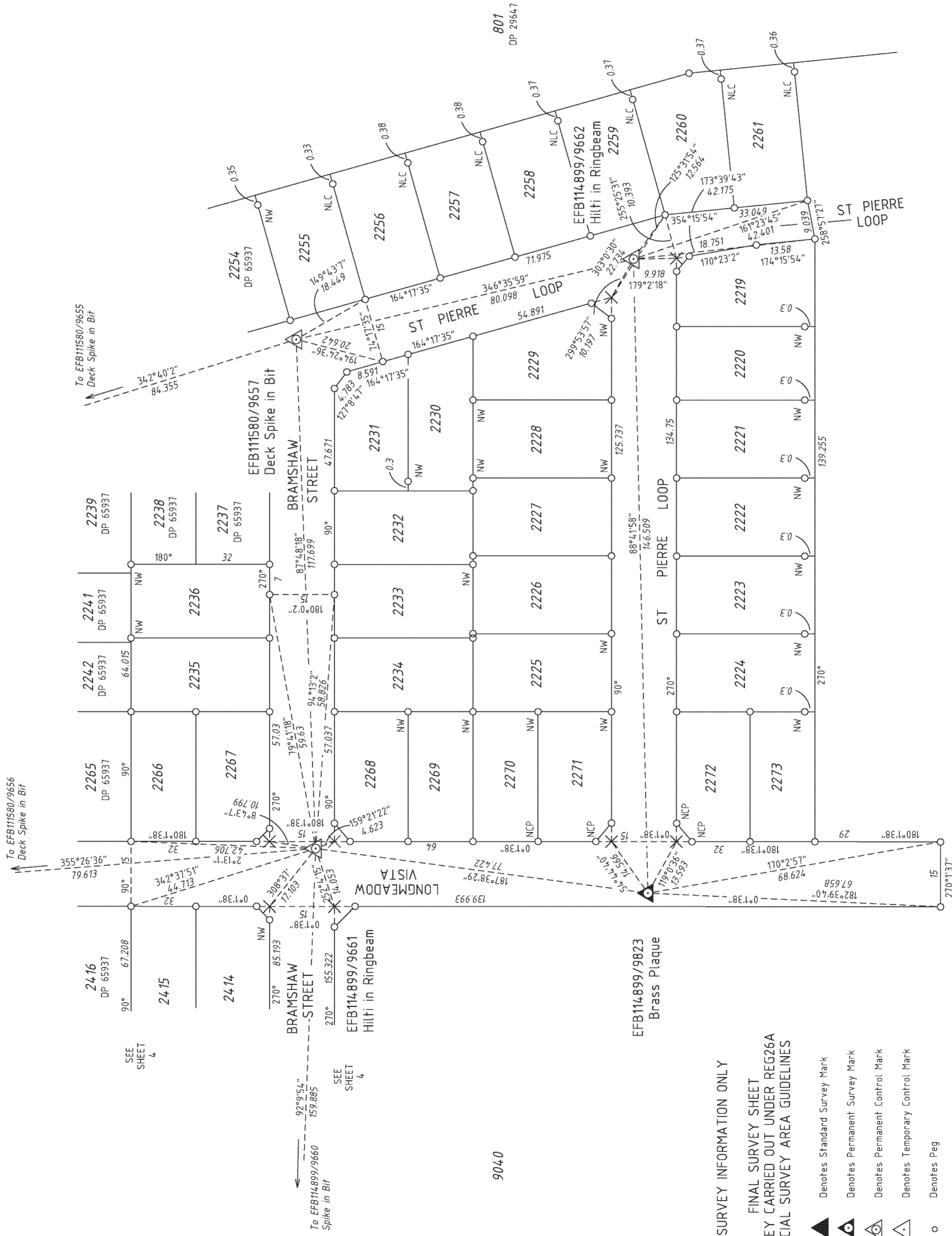
Western Australian Land Information Authority

DEPOSITED PLAN

68017

HELD BY LANDGATE  
IN DIGITAL FORM ONLY.

FOR HEADING SEE SHEET 1  
FOR INTERESTS AND NOTIFICATIONS SEE SHEET 1



**SURVEY INFORMATION ONLY**

FINAL SURVEY SHEET  
SURVEY CARRIED OUT UNDER REG26A  
SPECIAL SURVEY AREA GUIDELINES

- ▲ Denotes Standard Survey Mark
- Denotes Permanent Survey Mark
- ⊙ Denotes Permanent Control Mark
- △ Denotes Temporary Control Mark
- Denotes Peg
- × Spike

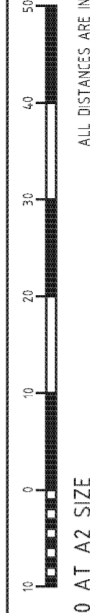
- NT - Nail in Top of Post    NCP - Nail in Concrete Path    NW - Nail in Wall
- NP - Nail in Brick Paving    NLC - Nail in Limestone Column

THIS SUBDIVISION AT THE TIME OF SURVEY  
MAY CONTAIN RETAINING WALLS WHICH  
ARE ALL LOCATED WITHIN THE HIGH (OR LOW) LOT/S

PROJECT GRID IS PCG 94



8186j444htlssal/cgn  
F9-0888-185-VER 10



SCALE: 1:750 AT A2 SIZE

SURVEYOR'S CERTIFICATE - Reg 54

PHILIP GEORGE JONATHAN

I hereby certify that this is accurate and is a

correct representation of the

(a) survey, and/or

(b) calculations from measurements

(delete if inapplicable)

underpin for the purposes of this plan and

that it complies with the relevant written laws)

in relation to which it is lodged

in

Date

Licensed Surveyor



Landgate

Western Australian Land Information Authority

DEPOSITED PLAN

68017

SHEET 5 OF 5

VERSION 2

# P68017

<i>Lot Number</i>	<i>Part Register Number</i>	<i>Section Sheet Number</i>	<i>Lot Number</i>	<i>Part Register Number</i>	<i>Section Sheet Number</i>
1729	2755/801	1	2219	2755/802	1
2220	2755/803	1	2221	2755/804	1
2222	2755/805	1	2223	2755/806	1
2224	2755/807	1	2225	2755/808	1
2226	2755/809	1	2227	2755/810	1
2228	2755/811	1	2229	2755/812	1
2230	2755/813	1	2231	2755/814	1
2232	2755/815	1	2233	2755/816	1
2234	2755/817	1	2235	2755/818	1
2236	2755/819	1	2255	2755/820	1
2256	2755/821	1	2257	2755/822	1
2258	2755/823	1	2259	2755/824	1
2260	2755/825	1	2261	2755/826	1
2266	2755/827	1	2267	2755/828	1
2268	2755/829	1	2269	2755/830	1
2270	2755/831	1	2271	2755/832	1
2272	2755/833	1	2273	2755/834	1
2362	2755/835	1	2363	2755/836	1
2364	2755/837	1	2365	2755/838	1
2366	2755/839	1	2367	2755/840	1
2368	2755/841	1	2369	2755/842	1
2406	2755/843	1	2407	2755/844	1
2408	2755/845	1	2409	2755/846	1
2410	2755/847	1	2411	2755/848	1
2412	2755/849	1	2413	2755/850	1
2414	2755/851	1	2415	2755/852	1
2420	2755/853	1	2421	2755/854	1
2422	2755/855	1	2423	2755/856	1
2424	2755/857	1	2425	2755/858	1
2426	2755/859	1	2427	2755/860	1
2428	2755/861	1	2429	2755/862	1
2430	2755/863	1	2431	2755/864	1
2432	2755/865	1	2433	2755/866	1
2434	2755/867	1	2435	2755/868	1
9040	2755/869	1			

# P68017

<i>Lot Number</i>	<i>Part Register Number</i>	<i>Section Sheet Number</i>	<i>Lot Number</i>	<i>Part Register Number</i>	<i>Section Sheet Number</i>
1729	2755/801	2	2362	2755/835	2
2363	2755/836	2	2364	2755/837	2
2365	2755/838	2	2366	2755/839	2
2367	2755/840	2	2368	2755/841	2
2369	2755/842	2	2406	2755/843	2
2407	2755/844	2	2408	2755/845	2
2409	2755/846	2	2410	2755/847	2
2411	2755/848	2	2412	2755/849	2
2413	2755/850	2	2414	2755/851	2
2415	2755/852	2	2420	2755/853	2
2421	2755/854	2	2422	2755/855	2
2423	2755/856	2	2424	2755/857	2
2425	2755/858	2	2426	2755/859	2
2427	2755/860	2	2428	2755/861	2
2429	2755/862	2	2430	2755/863	2
2431	2755/864	2	2432	2755/865	2
2433	2755/866	2	2434	2755/867	2
2435	2755/868	2	9040	2755/869	2



# P68017

<i>Lot Number</i>	<i>Part Register Number</i>	<i>Section Sheet Number</i>	<i>Lot Number</i>	<i>Part Register Number</i>	<i>Section Sheet Number</i>
2219	2755/802	3	2220	2755/803	3
2221	2755/804	3	2222	2755/805	3
2223	2755/806	3	2224	2755/807	3
2225	2755/808	3	2226	2755/809	3
2227	2755/810	3	2228	2755/811	3
2229	2755/812	3	2230	2755/813	3
2231	2755/814	3	2232	2755/815	3
2233	2755/816	3	2234	2755/817	3
2235	2755/818	3	2236	2755/819	3
2255	2755/820	3	2256	2755/821	3
2257	2755/822	3	2258	2755/823	3
2259	2755/824	3	2260	2755/825	3
2261	2755/826	3	2266	2755/827	3
2267	2755/828	3	2268	2755/829	3
2269	2755/830	3	2270	2755/831	3
2271	2755/832	3	2272	2755/833	3
2273	2755/834	3	9040	2755/869	3