

TAKE A TRIP TO AND FROM
GREEN SQUARE TOWN CENTRE

YOUR GREEN TRAVEL GUIDE

GREEN SQUARE



PLAN YOUR TRIP

Green Square is a vibrant and lively global village in Sydney's Inner East. Think of us as a place where you can escape the pressures of city living and connect with the things that matter most: community, family and friends.

Plan your trip to and from Green Square Town Centre using our handy travel guide. Whether you go by foot, bike, public transport or car share – you'll find everything within easy reach.

Opal cards are smartcard tickets that you keep, reload and reuse to pay for travel on public transport in Sydney. To find out how to order your Opal card, visit opal.com.au.

Visit transport.nsw.info or call 131 500 to check transport times and services. Alternatively, you can download one of these apps: TripGo, Triptastic, TripView.

Disclaimer: Please note that references to time and distances are estimated and believed to be correct as at 13/05/2019. Relevant travel websites should be checked for any updates.



GET THE TRAIN

A quick 2 minute walk from Green Square Plaza will deliver you track-side to Green Square Station where Sydney's vast network of trains and light rail awaits. Start planning your adventures now. You'll find Green Square Station and its new bike storage facility at the corner of Botany Road and O'Riordan Street. Grab your Opal card and go.



Green Square Train Station

Frequency:

Peak: Approximately every 3–10 mins

Off-peak: Approximately every 7–15 mins

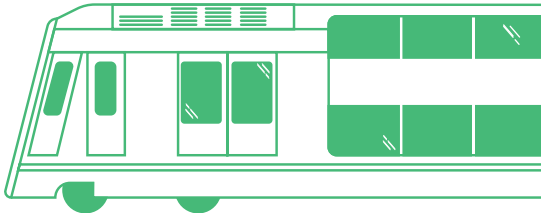
Approx Travel Time:

Central Station: 4 mins

Sydney Domestic Airport

Station: 5 mins

For more information about train timetables, visit transportnsw.info or call 131 500.



CATCH THE BUS

Take advantage of Sydney Bus Network's fleet of buses buzzing past Green Square every 10 minutes and more. Whether it's a lazy Sunday outing or the standard weekday commute, the following network will have you at your destination in no time at all. Grab your Opal card and go.

BUS
309

Banksmeadow - Railway Square

Bus stop: Green Square
Station, Botany Road
Runs: Every 10 ins during
morning and afternoon peaks

BUS
309H

Railway Square - Port Botany

Bus stop: Green Square
Station, Botany Road
Runs: Every 10 ins during
morning and afternoon peaks

BUS
305

Railway Square—Mascot

Bus stop: Maddox Street,
after Bourke Street
Runs: Outbound in peak
periods, 3 services/hour

BUS
355

Marrickville—Bondi Junction

Bus stop: McEvoy Street
at Wyndham Street
Runs: Every 30 mins

BUS
370

Coogee—Leichhardt

Bus stop: Botany Road, south
of O'Riordan Street
Runs: Every 10 mins

BUS
343

Chatswood—Kingsford

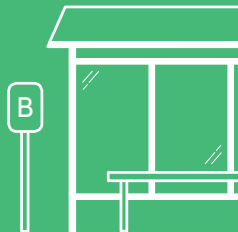
Bus stop: Elizabeth Street,
near Bourke Street
Runs: Every 10 mins
in peak direction

BUS
310H

Banksmeadow - Railway Square (Express service)

Bus stop: Botany Road before
O'Riordan Street
Runs: Every 10 mins during
morning and afternoon peaks

For more information about bus routes and timetables, visit transportnsw.info or call 131 500.

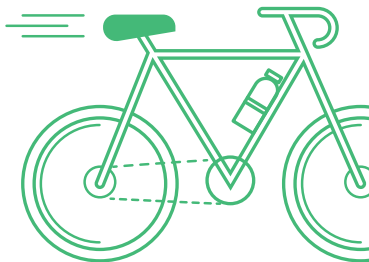


RIDE YOUR BIKE

Zip into Central Station in just 10 minutes using George Street's cycleway. There is also the Bourke Street shared path right at your doorstep which will take you to the city east. Estimated times from Green Square Station are:

15 mins	UTS BROADWAY CAMPUS	14 mins	NEWTOWN STATION
15 mins	UNIVERSITY OF NSW	20 mins	SYDNEY CBD
15 mins	UNIVERSITY OF SYDNEY	10 mins	CENTRAL STATION
12 mins	REDFERN STATION	8 mins	SYDNEY PARK

Please visit sydneycycleways.net to order your free copy of the Sydney Cycling Guide and Map.



HIRE A CAR

Need to borrow a car or a van? Green Square has you well covered with nine dedicated car share pods, all within a 400-metre walk of our town centre. If you live in an apartment, your building might also have car share spots so speak to your Building Manager.

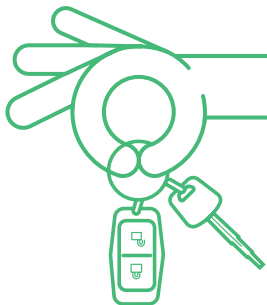
If you're in a hurry and need a taxi, you can easily hail one from the main streets in Green Square.

To hire a GoGet car, follow these simple steps:

1. Go to [goget.com.au](https://www.goget.com.au)
2. Join and select a rate plan that suits you
3. Pay an annual fee (including fuel, insurance, maintenance and cleaning)
4. Reserve your car online or by phone
5. Access cars with a personalised key card

To hire a Flexicar, follow these simple steps:

1. Go to [flexicar.com.au](https://www.flexicar.com.au)
2. Join and reserve your Flexicar online or by the mobile app
3. Unlock your car with the 6-digit entry PIN



GO BY FOOT

Put your best foot forward! Green Square is a hop, skip and a jump from many of the Inner Eastern suburbs. Our streets are made for walking with our convenient pedestrian routes showing you the way to surrounding neighbourhoods and parklands. Estimated times from Green Square Station are:

15
mins

EAST VILLAGE
SHOPPING CENTRE

35
mins

SURRY HILLS

13
mins

THE GROUNDS
OF ALEXANDRIA

35
mins

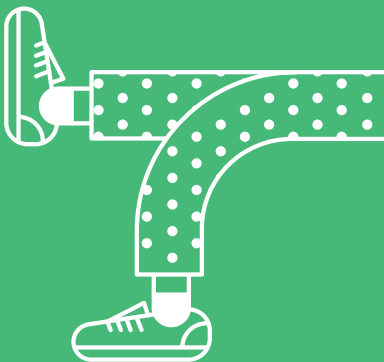
NEWTOWN

18
mins

THE CANNERY
ROSEBERY

18
mins

DANKS STREET
WATERLOO



GREEN SQUARE



GREEN SQUARE.MIRVAC.COM



- University of Sydney
- Royal Prince Alfred Hospital
- Erskineville Station
- Newtown Station
- Perry Park
- McConeville Reserve
- St Peters Station
- Beaconsfield Park
- The Grounds of Alexandria
- Sydney Park
- Sydney International Airport

- Carriageworks
- Redfern
- Waterloo Station (future metro station)
- University of Technology Sydney
- Green Square
- Green Square Library & Plaza
- Mascot Station
- The Cannery, Rosebery

- Alexandria Park with Tennis Courts
- Waterloo Oval
- Sydney CBD
- Botany Rd
- Bourke Rd
- O'Riordan St
- Botany Rd
- Bourke Rd
- Tweed Pl
- Ebsworth St
- Paul St
- Hansard St
- Reserve St
- Collins St

- St Vincent's Hospital
- Danks St, Waterloo
- Surry Hills
- Tote Park
- Joynton Park
- Mary O'Brien Reserve
- The Drying Green Future Park
- Waranara Early Education Centre
- Future Aquatic & Recreation Centre
- Gunyama Park Future Park
- Community and Cultural Precinct
- Beaconsfield Park
- The Grounds of Alexandria
- Sydney Park
- Sydney International Airport

- Moore Park
- Centennial Park
- University of New South Wales
- Prince of Wales Hospital
- Bondi Beach
- Coogee Beach

GREEN SQUARE

TRAVEL GUIDE KEY

- Main road
- Road
- Bus route
- Future road
- Park
- Green Square Library & Plaza
- Town Centre development
- Bus stop
- Green Square train station
- Car share pod
- Bike shop
- Supermarket

CYCLEWAYS

- Separated on-road cycleway
- Direct route with higher traffic
- Off-road shared path
- Low traffic off-road quiet route

13/05/2019 v2

100m