

# Plantation Ready Built Series

## THE CAPELLA

Eligible for  
**\$15,000**  
first home  
owners grant



Indicative Image

**\$539,900**

**4 KOSCIUSZKO CIRCUIT**

**4 2 2+ MEDIA**

LOT 1653

LOT SIZE: 400M<sup>2</sup>

HOME SIZE: 214M<sup>2</sup>

By Plantation Homes



### TURN KEY INCLUSIONS

- + Only \$5,000 deposit, no more to pay until you move in
- + Designer kitchen with Caesarstone benchtops
- + Luxury SMEG 900mm stainless steel appliances including freestanding cooker and canopy rangehood
- + Capped off cold water point in fridge space plus dishwasher
- + Split system air-conditioning to spacious living area
- + Master suite with walk-in robe & luxurious ensuite
- + Three secondary bedrooms with built-in robes
- + Separate media room/ leisure area
- + Timber-look main floors/ carpet throughout with tiles to wet areas
- + Landscaped front garden and turf to rear
- + Fencing, letterbox & clothesline included

07 5549 2322  
GAINSBOROUGHGREENS.COM.AU

Gainsborough  
Greens PIMPAMA

MIRVAC

Disclaimer: The information herein is believed to be correct but is not guaranteed. Changes will undoubtedly be made during the development and specifications and fittings may change without notice. Prospective purchasers must refer to the contract of sale for the list of inclusions. Prospective purchasers must rely on their own enquiries. Copyright - PRICE CORRECT AS AT 24/01/2020.

# FLOORPLAN

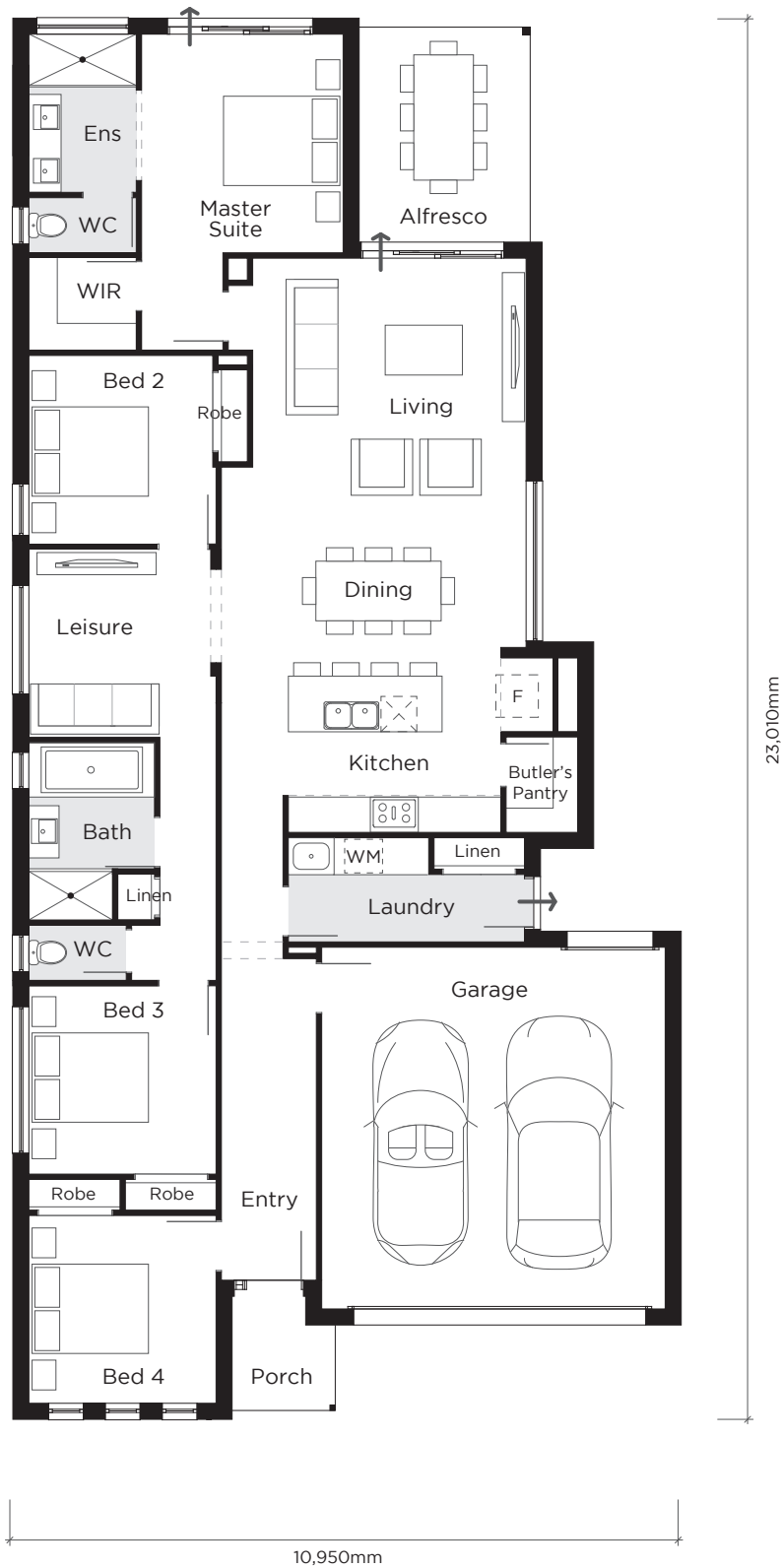
4 KOSCIUSZKO CCT

4 Beds 2 Baths 2 Car

LOT 1653

LOT SIZE: 400M<sup>2</sup>

HOME SIZE: 214M<sup>2</sup>



For further information please contact:  
Carol Pollard on 0418 455 631  
Sue Govenor on 0414 433 770