

Plantation Ready Built Series

THE ALLORA

Eligible for
\$15,000
first home
owners grant



\$539,900

23 BUTTERLEAF CRESCENT

4 2 2+ MEDIA

LOT 1094

LOT SIZE: 420M²

HOME SIZE: 249M²

By Plantation Homes



TURN KEY INCLUSIONS

- + Only \$5,000 deposit, no more to pay until you move in
- + Designer kitchen with Caesarstone benchtops
- + Luxury SMEG 900mm stainless steel appliances including freestanding cooker and canopy rangehood
- + Capped off cols water point in fridge space plus dishwasher
- + Split system air-conditioning to spacious living area
- + Master suite with walk-in robe & luxurious ensuite
- + Three secondary bedrooms with built-in robes
- + Separate media room/ leisure area
- + Timber-look main floors/ carpet throughout with tiles to wet areas
- + Landscaped front garden and turf to rear
- + Fencing, letterbox & clothesline included

07 5549 2322
GAINSBOROUGHGREENS.COM.AU

Gainsborough
Greens PIMPAMA

MIRVAC

Disclaimer: The information herein is believed to be correct but is not guaranteed. Changes will undoubtedly be made during the development and specifications and fittings may change without notice. Prospective purchasers must refer to the contract of sale for the list of inclusions. Prospective purchasers must rely on their own enquiries. Copyright - PRICE CORRECT AS AT 21/08/2019.

FLOORPLAN

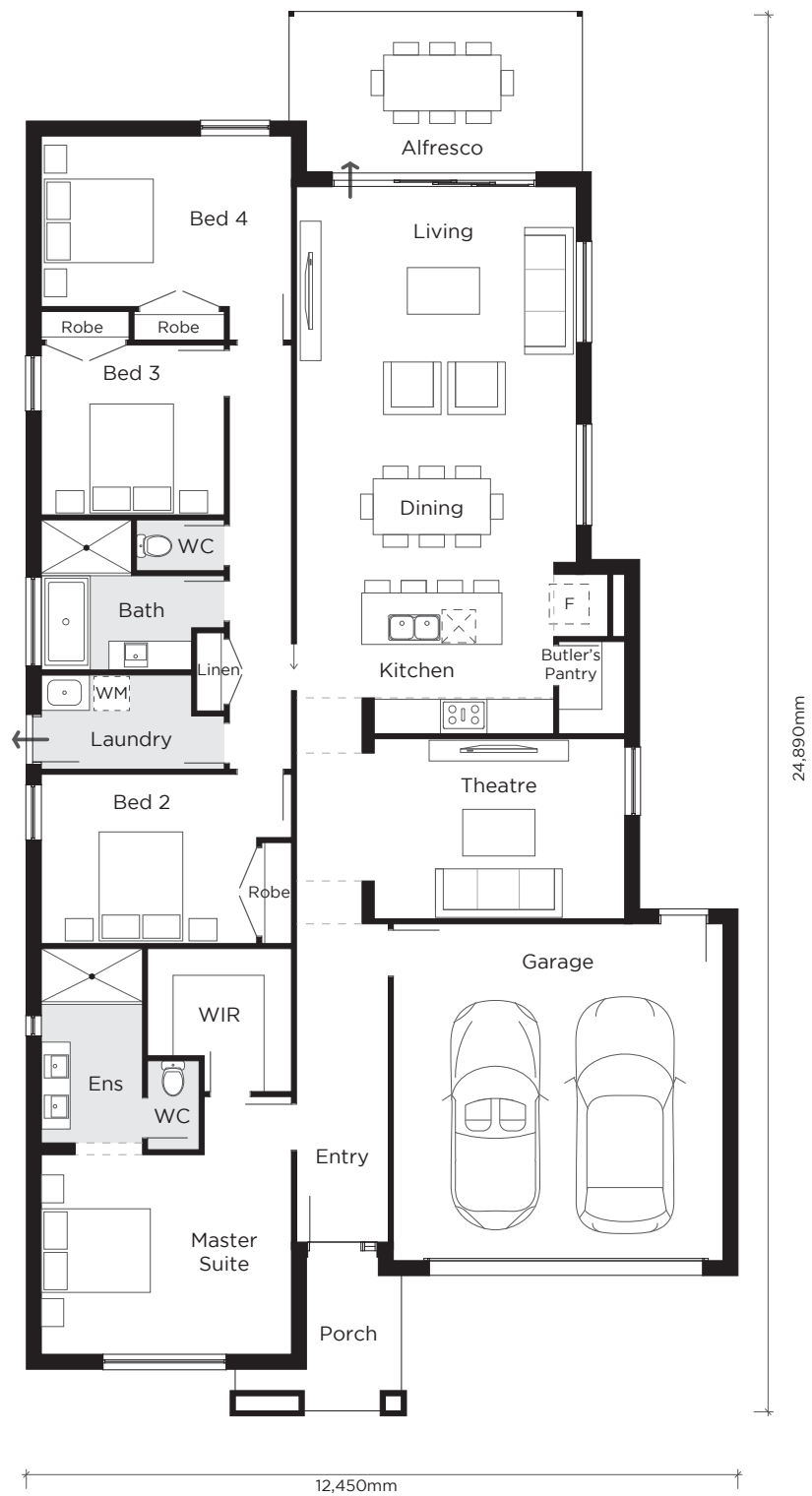
23 BUTTERLEAF CT

4 2 2

LOT 1094

LOT SIZE: 420M²

HOME SIZE: 249M²



For further information please contact:
Carol Pollard on 0418 455 631
Sue Govenor on 0414 433 770