



3

2

2

2

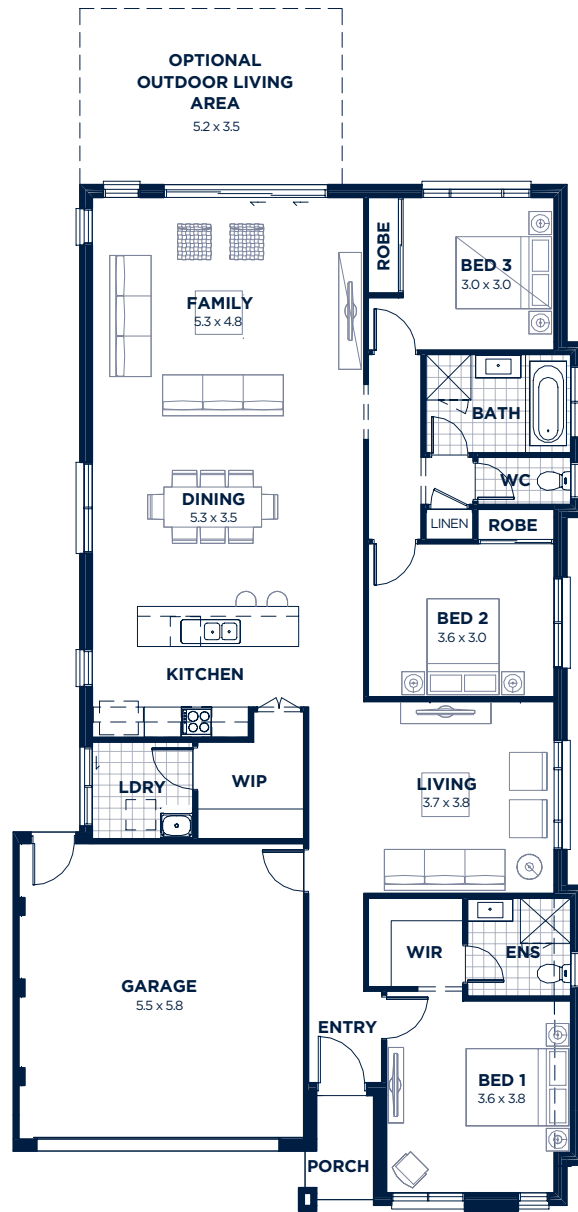
Total Area
202m²*

*Excluding alfresco area

Lot 6125

406m²

12.5m FRONTAGE
SOUTH FACING BLOCK



FLOOR PLAN

*Discounted price only available for purchasers who enter into a contract for sale for the selected lots before 31 August 2020. Mirvac reserves the right, at its sole discretion, to cancel, modify, extend or suspend the promotion at any time without notice.

Mirvac reserves the right to change prices and inclusions without notice prior to contract, and thereafter subject to the terms of the contract. Package price is subject to acceptance of builder tender and approvals. Price includes Mirvac Elite and Turnkey packages, site costs, open air patio, mechanical ventilation (fully ducted air-conditioning system) and 2595mm high ceilings. Price does not include stamp duty, legal fees, financing costs or other transaction costs. Illustrations are artist's impressions only. Plan shows Aston facade. This document is not an offer capable of being accepted. For more information, speak with a Sales Consultant. Terms and conditions apply. Mirvac Homes pricing based on July 2019 Price List. Version 1, 03/07/2020. Mirvac Homes (NSW) Pty Ltd ACN 006 922 998. Builder License No: 101738C

**AWARD WINNING
EXCELLENCE SINCE
1972, WE HAVE WON
OVER 700 AWARDS
INCLUDING:**



AIA - 2019
Sustainable
Architecture

My Ideal House
Gledswood Hills, NSW



EXCELLENCE AWARD - 2019
Masterplanned
Community Development

Brighton Lakes
Moorebank, NSW



NATIONAL UDIA - 2019
Best Residential
Development

Brighton Lakes
Moorebank, NSW



NATIONAL UDIA - 2018
Sustainability &
Environmental Technology

Brighton Lakes
Moorebank, NSW

