



3

2



2.5

3

Total Area

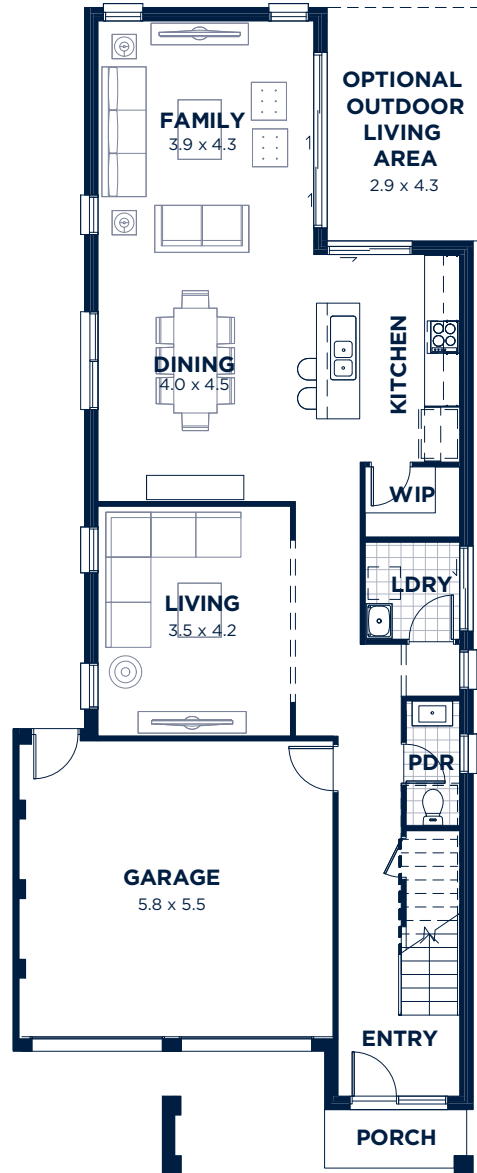
**261m<sup>2</sup>\***

\*Excluding alfresco area

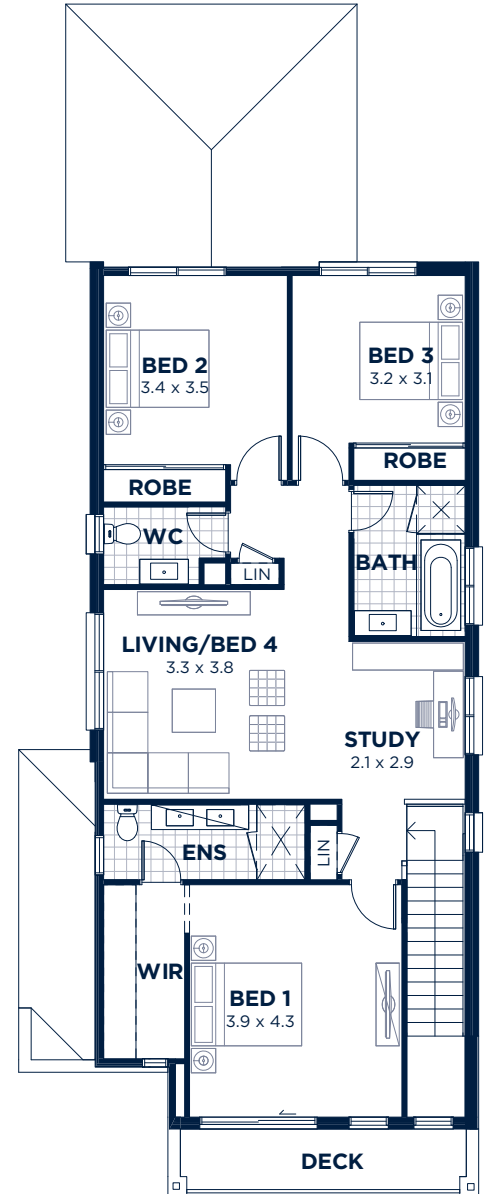
Lot 6105

**400m<sup>2</sup>**

12.5M FRONTAGE  
EAST FACING BLOCK



**GROUND FLOOR PLAN**



**FIRST FLOOR PLAN**

\*Discounted price only available for purchasers who enter into a contract for sale for the selected lots before 31 August 2020. Mirvac reserves the right, at its sole discretion, to cancel, modify, extend or suspend the promotion at any time without notice.

Mirvac reserves the right to change prices and inclusions without notice prior to contract, and thereafter subject to the terms of the contract. Package price is subject to acceptance of builder tender and approvals. Price includes Mirvac Elite Package, site costs, mechanical ventilation (fully ducted air-conditioning system) and 2595mm high ceilings to ground floor. Price does not include stamp duty, legal fees, financing costs or other transaction costs. Illustrations are artist's impressions only. Plan shows Allison facade. This document is not an offer capable of being accepted. For more information, speak with a Sales Consultant. Terms and conditions apply. Mirvac Homes pricing based on July 2019 Price List, Version 1, 03/07/2020. Mirvac Homes (NSW) Pty Ltd ACN 006 922 998. Builder License No: 101738C

**AWARD WINNING  
EXCELLENCE SINCE  
1972, WE HAVE WON  
OVER 700 AWARDS  
INCLUDING:**



**AIA - 2019**

Sustainable  
Architecture

My Ideal House  
Gledswood Hills, NSW

**Urban Taskforce**  
AUSTRALIA

**EXCELLENCE AWARD - 2019**

Masterplanned  
Community Development

Brighton Lakes  
Moorebank, NSW



**NATIONAL UDIA - 2019**

Best Residential  
Development

Brighton Lakes  
Moorebank, NSW



**NATIONAL UDIA - 2018**

Sustainability &  
Environmental Technology

Brighton Lakes  
Moorebank, NSW

