

**TWO BED TWO BATH**

**LEVEL 3**

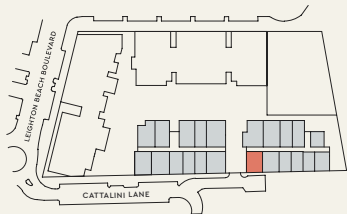
**APARTMENT E301**

Internal Area **75m<sup>2</sup>**

External Area **18m<sup>2</sup>**

Total Area **93m<sup>2</sup>**

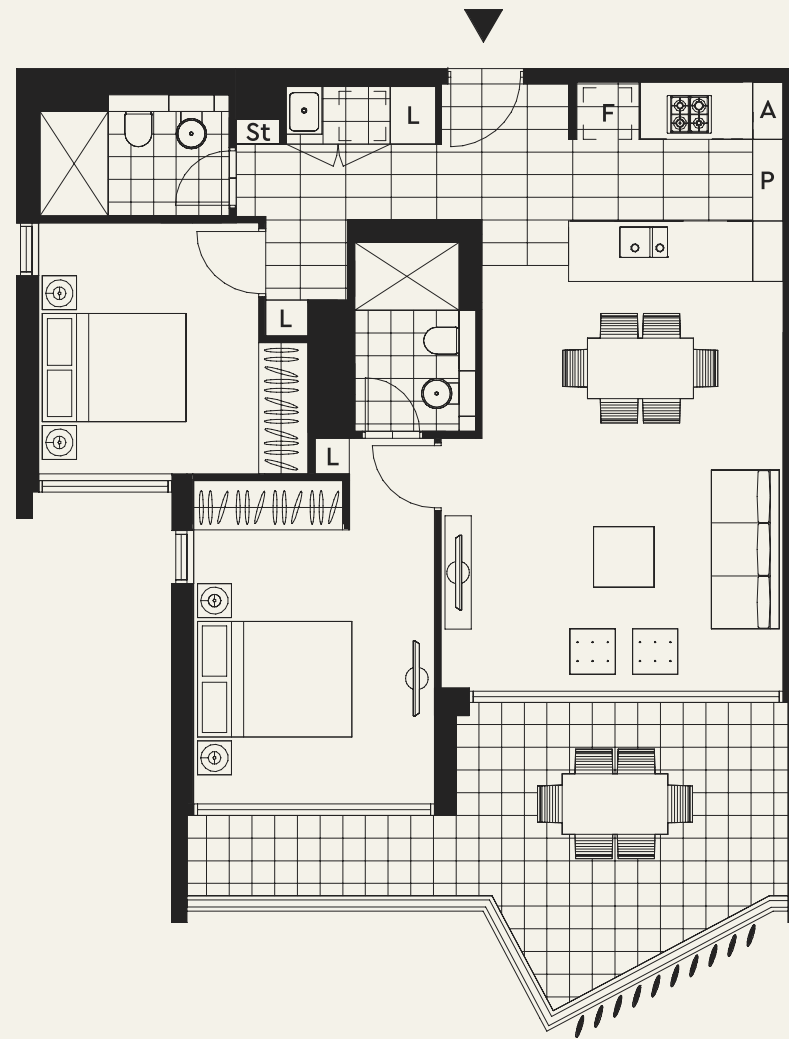
Areas subject to final survey, area includes balcony and/or terrace where applicable. It excludes parking and external storage areas.



Date:

**Note:** Prices are correct at the date of printing and are subject to change without notice.

For further enquiries  
call 08 9424 9999 or visit  
[compass.mirvac.com](http://compass.mirvac.com)



**DRAWING NOTES**

Please note that this floor plan was produced prior to completion of construction. The information contained herein is believed to be correct but is not guaranteed. Dimensions and areas are approximate. Changes will undoubtedly be made during development and subject to change without notice in accordance with the provision of the contract for sale. The furniture and furnishings depicted are not included with any sale and furnishings should not be taken to indicate the final position of power points, TV connection points and the like. Prospective purchasers must refer to the contract for sale for the list of inclusions. All graphics, including tile layout, balustrades, planting, louvres and sunshading devices, are indicative only. **NOTE:** Bulkheads necessary for services are not depicted. Floor plans are at an unspecified scale. Plans do not show additional features within each lot such as hot water systems, service yards, letterboxes and side and rear retaining walls. Purchaser option noted on floor plans is located on some lots only and is available at purchaser cost only at time of sale. 28/09/2016 [A]

