

# Smiths Lane Landscaping Packages

## Kitchen Garden

### Planting Palette

#### 1. FEATURE CITRUS



**Lemon Tree**  
*Citrus limon*

#### 2. FLOWERING EDGE



**Blue Flax Lily**  
*Dianella revoluta*



**Coastal Rosemary**  
*Westringia fruticosa*



**White Correa**  
*Correa alba*

#### 3. VIOLET CARPET



**Chocolate Lily**  
*Arthropodium strictum*



**Fairy Fan Flower**  
*Scaevola aemula*



**Native Violet**  
*Viola hederacea*

#### 4. HERB BED



**Lemon Thyme**  
*Thymus x citriodorus*



**Parsley**  
*Petroselinum crispum*



**Basil**  
*Ocimum basilicum*



**Australian Mint**  
*Mentha australis*



**Rosemary**  
*Rosmarinus officinalis*



**Common Sage**  
*Salvia officinalis*

#### 5. RAISED PLANTER - SEASONAL MIX



**Common Spinach**  
*Spinacia oleracea*



**Cherry Tomato**  
*Solanum lycopersicum*  
var. *cerasiforme*



**Rainbow Chard**  
*Beta vulgaris* subsp. *vulgaris*

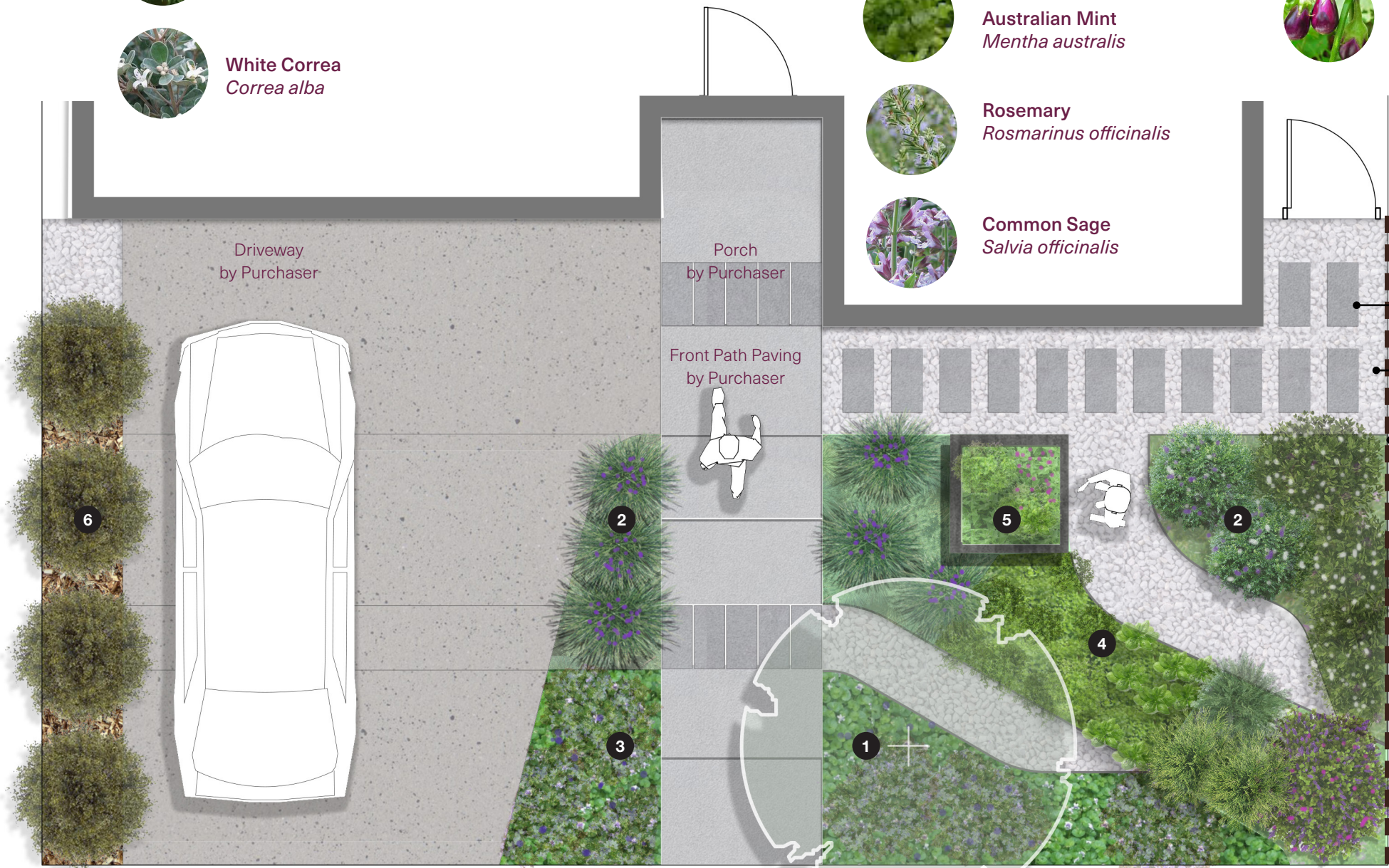


**Eggplant**  
*Solanum melongena*

#### 6. OLIVE EDGE



**Dwarf Olive Tree**  
*Olea europaea*  
'Garden Harvest'



**Disclaimer:** The information contained on this flyer is believed to be correct but is not guaranteed. The landscaping packages list was prepared prior to development approval, statutory approvals and commencement of construction. Prospective purchasers must refer to the contract for sale for the packages. Landscaping packages stated are as intended at the date of publication of this list and are subject to change or substitution in accordance with the contract for sale. Correct as at 05/11/2020. **Note:** the species shown here are indicative only of the plants that will be provided. Mirvac reserves the right to substitute species that will fulfill the same functional design. Plants suitable for shady or semi-shady areas. All garden and lawn areas shown are irrigated. Layouts will be amended to suit individual lot widths and may be amended to accommodate existing services.



# Smiths Lane Landscaping Packages

## Contemporary Cottage Garden

### Planting Palette

#### 1. FEATURE EVERGREEN



**Weeping Lilli Pilli**  
*Waterhousia floribunda*

#### 2. FLORAL EDGE



**Royal Purple**  
*Liriope Muscari*

#### 3. EMERALD CARPET



**Mondo Grass**  
*Ophiopogon japonicus*



**Option: Instant Turf**  
*Kikuyu 'Village Green'*

#### 4. COTTAGE MIX



**Oyster Plant**  
*Acanthus mollis*



**Dwarf Cardamom**  
*Alpinia nutans*



**Purple Fountain Grass**  
*Pennisetum x advena 'Rubrum'*



**'Matapouri Bay'**  
*Arthropodium cirratum*



**Tree Germander**  
*Teucrium fruticans*



**Woodland Sage**  
*Salvia caradonna*



**Midnight Mexican Sage**  
*Salvia leucantha 'Midnight'*

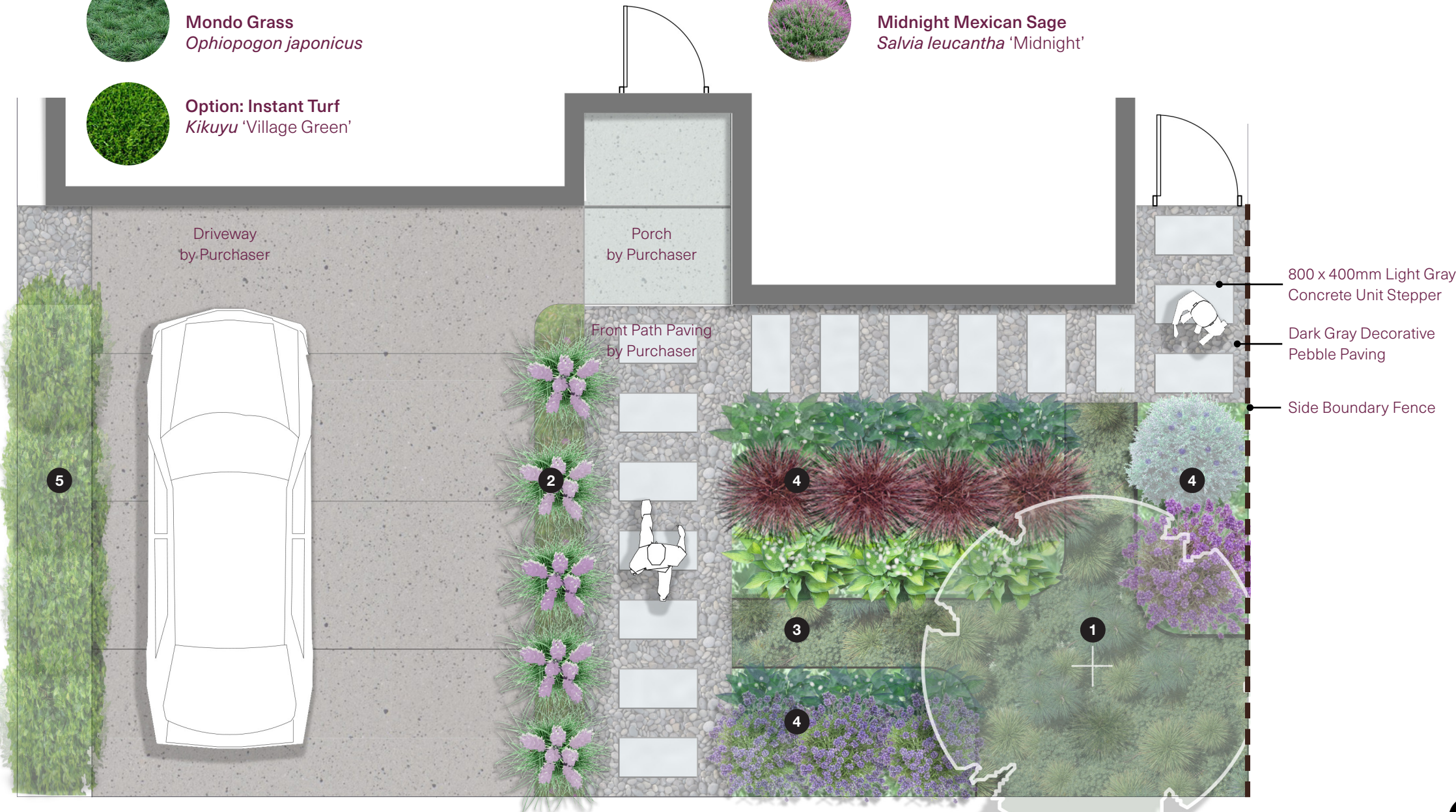


**Azalea 'Autumn Ivory'**  
*Rhododendron hybrid*

#### 5. COTTAGE HEDGE



**Sweet Viburnum**  
*Viburnum odoratissimum*



**Disclaimer:** The information contained on this flyer is believed to be correct but is not guaranteed. The landscaping packages list was prepared prior to development approval, statutory approvals and commencement of construction. Prospective purchasers must refer to the contract for sale for the packages. Landscaping packages stated are as intended at the date of publication of this list and are subject to change or substitution in accordance with the contract for sale. Correct as at 05/11/2020. **Note:** the species shown here are indicative only of the plants that will be provided. Mirvac reserves the right to substitute species that will fulfill the same functional design. Plants suitable for shady or semi-shady areas. All garden and lawn areas shown are irrigated. Layouts will be amended to suit individual lot widths and may be amended to accommodate existing services.



# Smiths Lane Landscaping Packages

## Native Garden

### Planting Palette

#### 1. FEATURE SHADE TREE



**Kanooka**  
*Tristaniopsis laurina*

#### 2. SHRUB MIX



**Wattlebird Yellow**  
*Grevillea*



**Coastal Rosemary**  
*Westringia fruticosa*



**Silver Plectranthus**  
*Plectranthus argentatus*

#### 3. GOLDEN GRASS MIX



**Yellow Kangaroo Paw**  
*Anigozanthos flavidus* 'Yellow'



**Orange Cross Kangaroo Paw**  
*Anigozanthos x hybrid* 'Orange Cross'



**Billy Buttons**  
*Pycnosorus globosus*



**Lime Tuff**  
*Lomandra longifolia* 'Lime'



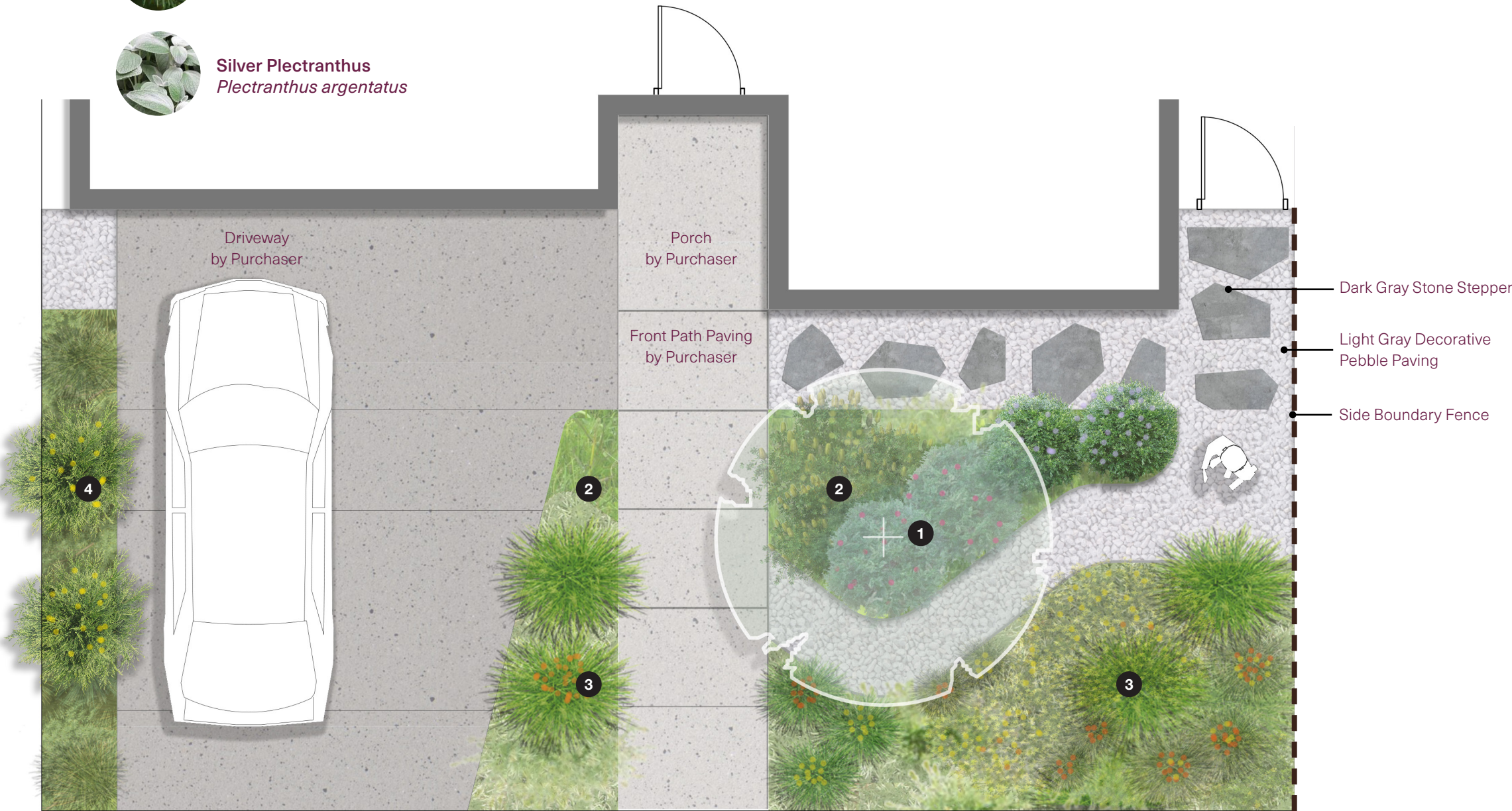
**Common Everlasting**  
*Chrysocephalum apiculatum*



**Silver Banksia**  
*Banksia marginata*



**Common Tussock-grass**  
*Poa labillardierei*



**Disclaimer:** The information contained on this flyer is believed to be correct but is not guaranteed. The landscaping packages list was prepared prior to development approval, statutory approvals and commencement of construction. Prospective purchasers must refer to the contract for sale for the packages. Landscaping packages stated are as intended at the date of publication of this list and are subject to change or substitution in accordance with the contract for sale. Correct as at 05/11/2020. **Note:** the species shown here are indicative only of the plants that will be provided. Mirvac reserves the right to substitute species that will fulfill the same functional design. Plants suitable for shady or semi-shady areas. All garden and lawn areas shown are irrigated. Layouts will be amended to suit individual lot widths and may be amended to accommodate existing services.



# Smiths Lane Landscaping Packages

## Resilient Garden

### Planting Palette

#### 1. FEATURE NATIVE TREE



**Tuckeroo**  
*Cupaniopsis anacardioides*

#### 2. TEXTURAL CARPET



**'Ging Gin Gem'**  
*Grevillea obtusifolia*



**Gold Cover Goodneia**  
*Goodenia ovata 'Gold Cover'*



**Ruby Saltbush**  
*Enchylaena tomentosa*

#### 3. FEATURE PLANTS



**Mediterranean Spurge**  
*Euphorbia characias*  
subsp. *wulfenii*



**New Zealand Flax**  
*Phormium tenax*



**New Zealand Flax 'Evening Glow'**  
*Phormium 'Evening Glow'*



**Lecadendron 'Safari Goldstrike'**  
*Leucadendron strobilinum x laureolum*



**Lilly Pilly**  
*Acmena smithii 'Dusky'*



**Pride of Maderia**  
*Echium candicans*



**White Correa**  
*Correa alba*

#### 4. FLOWERING EDGE



**Disclaimer:** The information contained on this flyer is believed to be correct but is not guaranteed. The landscaping packages list was prepared prior to development approval, statutory approvals and commencement of construction. Prospective purchasers must refer to the contract for sale for the packages. Landscaping packages stated are as intended at the date of publication of this list and are subject to change or substitution in accordance with the contract for sale. Correct as at 05/11/2020. **Note:** the species shown here are indicative only of the plants that will be provided. Mirvac reserves the right to substitute species that will fulfill the same functional design. Plants suitable for shady or semi-shady areas. All garden and lawn areas shown are irrigated. Layouts will be amended to suit individual lot widths and may be amended to accommodate existing services.