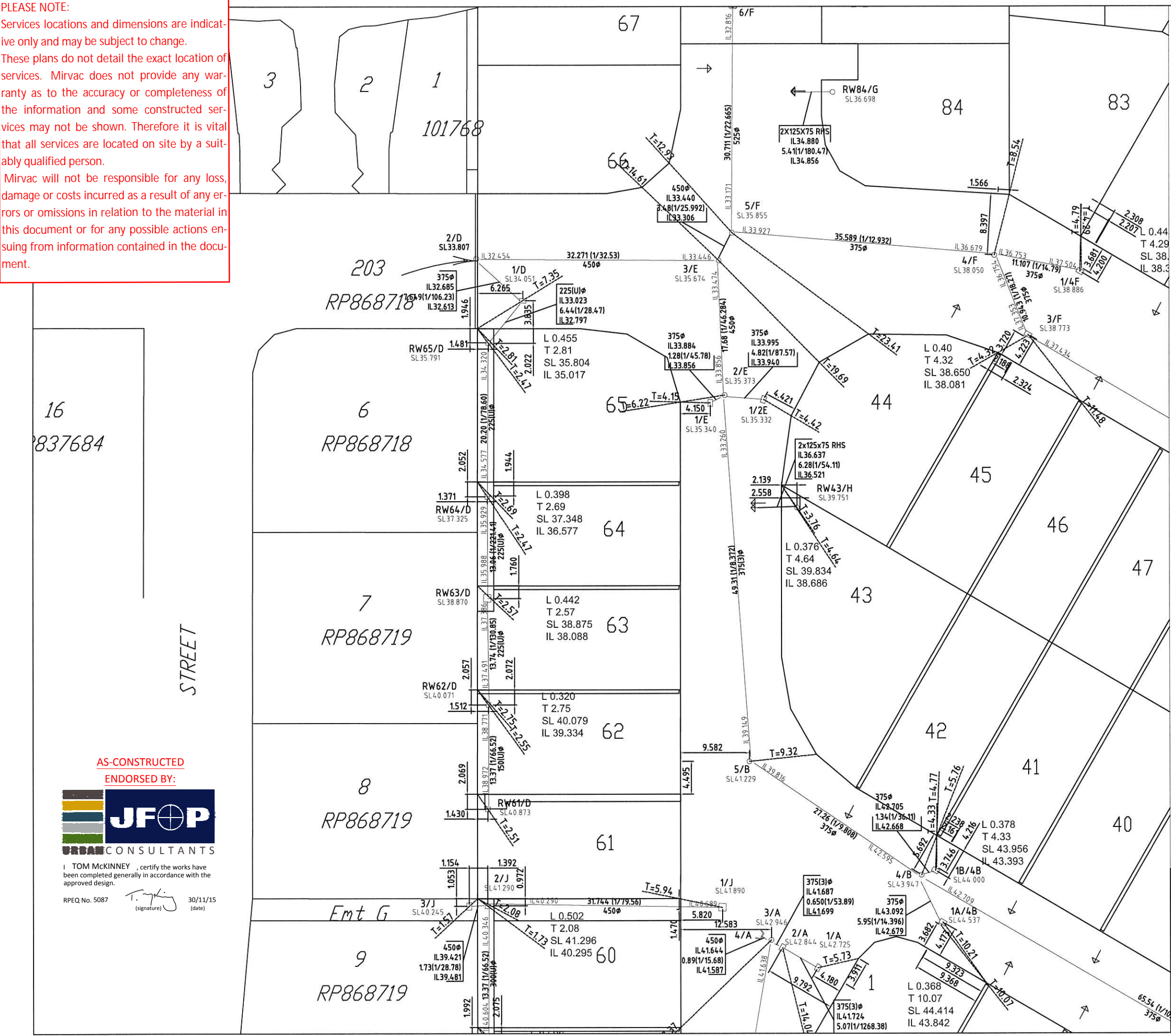


PLEASE NOTE:
Services locations and dimensions are indicative only and may be subject to change.
These plans do not detail the exact location of services. Mirvac does not provide any warranty as to the accuracy or completeness of the information and some constructed services may not be shown. Therefore it is vital that all services are located on site by a suitably qualified person.
Mircav will not be responsible for any loss, damage or costs incurred as a result of any errors or omissions in relation to the material in this document or for any possible actions ensuing from information contained in the document.





PLEASE NOTE:
Services locations and dimensions are indicative only and may be subject to change.
These plans do not detail the exact location of services. Mirvac does not provide any warranty as to the accuracy or completeness of the information and some constructed services may not be shown. Therefore it is vital that all services are located on site by a suitably qualified person.
Mircac will not be responsible for any loss, damage or costs incurred as a result of any errors or omissions in relation to the material in this document or for any possible actions ensuing from information contained in the document.

STORMWATER RETICULATION

NAME OF ESTATE	ASTON GROVE, STAGE 1A
LOCATION	26 DARIEN STRET, BRIDGEMAN DOWNS
COUNCIL FILE	A003963559
B.C.C DELEGATES	
APPROVAL DATE	

NOTES
1. ALL STORMWATER PIPES ARE RCP CLASS 2 U.N.O
2. YEAR OF CONSTRUCTION 2015

LEGEND
KERB ENTRY ADAPTOR
GULLY PIT
STORMWATER MANHOLE

ASSET REGISTER (TICK APPROPRIATE BOX)

BCC FUNDED	DEVELOPER FUNDED
STATE GOVT. FUNDED	FEDERAL GOVT. FUNDED

'AS CONSTRUCTED' - SIGHTED
ASSEST FUNDING INFORMATION - COMPLETED
SIGNED _____ DATE _____

CERTIFICATION OF AS-CONSTRUCTED WORKS BY CIVIL CONTRACTOR
AS THE PRINCIPAL CONTRACTOR FOR THE ABOVE CIVIL WORKS,PENSAR CONSTRUCTIONS GROUP DO CERTIFY THAT ALL CIVIL WORKS FOR THE DEVELOPMENT AT 26 DARIEN STREEST, BRIDGEMAN DOWNS HAVE BEEN CONSTRUCTED UNDER THE SUPERVISION OF A PENSAR CONSTRUCTIONS GROUP REPRESENTATIVE IN ACCORDANCE WITH THE RELEVANT AUTHORITY STANDARDS, THE APPROVED CIVIL ENGINEERING PLANS AND SPECIFICATION, AND ANY ASSOCIATED APPROVED PLAN AMENDMENTS. WE CONFIRM THAT THE AS CONSTRUCTED DATA AND TESTING CERTIFICATES PROVIDED TO INTELJARA INTEGRATED SOLUTIONS REPRESENT A TRUE AND ACCURATE REFLECTION OF THE WORKS COMPLETED ON SITE.
SIGNATURE: _____
NAME: **NICHOLAS SOMERVILLE**
DULY AUTHORISED ON BEHALF OF: PENSAR CONSTRUCTIONS GROUP
DATE: **30/1/15**

CERTIFICATION OF AS-CONSTRUCTED WORKS BY SURVEYOR
QUEENSLAND SURVEYING SOLUTIONS PTY LTD DO CERTIFY THAT THE AS CONSTRUCTED DATA AND PLANS PROVIDED TO PENSAR CONSTRUCTIONS GROUP (AS THE PRINCIPAL CIVIL CONTRACTOR) FOR THE DEVELOPMENT AT 26 DARIEN STREEST, BRIDGEMAN DOWNS IS A TRUE AND ACCURATE REFLECTION OF THE WORKS COMPLETED ON SITE. WE CONFIRM THAT ALL DATA AND PLANS HAVE BEEN PRESENTED USING THE CORRECT DATUM AND ORIENTATION APPROPRIATE TO THE SITE IN A FORMAT AS REQUIRED BY THE RELEVANT LOCAL AUTHORITY STANDARDS.
SIGNATURE: _____
NAME: JOHN DONALD O'BRIEN
DULY AUTHORISED ON BEHALF OF: QUEENSLAND SURVEYING SOLUTIONS PTY LTD
DATE: 24/11/15

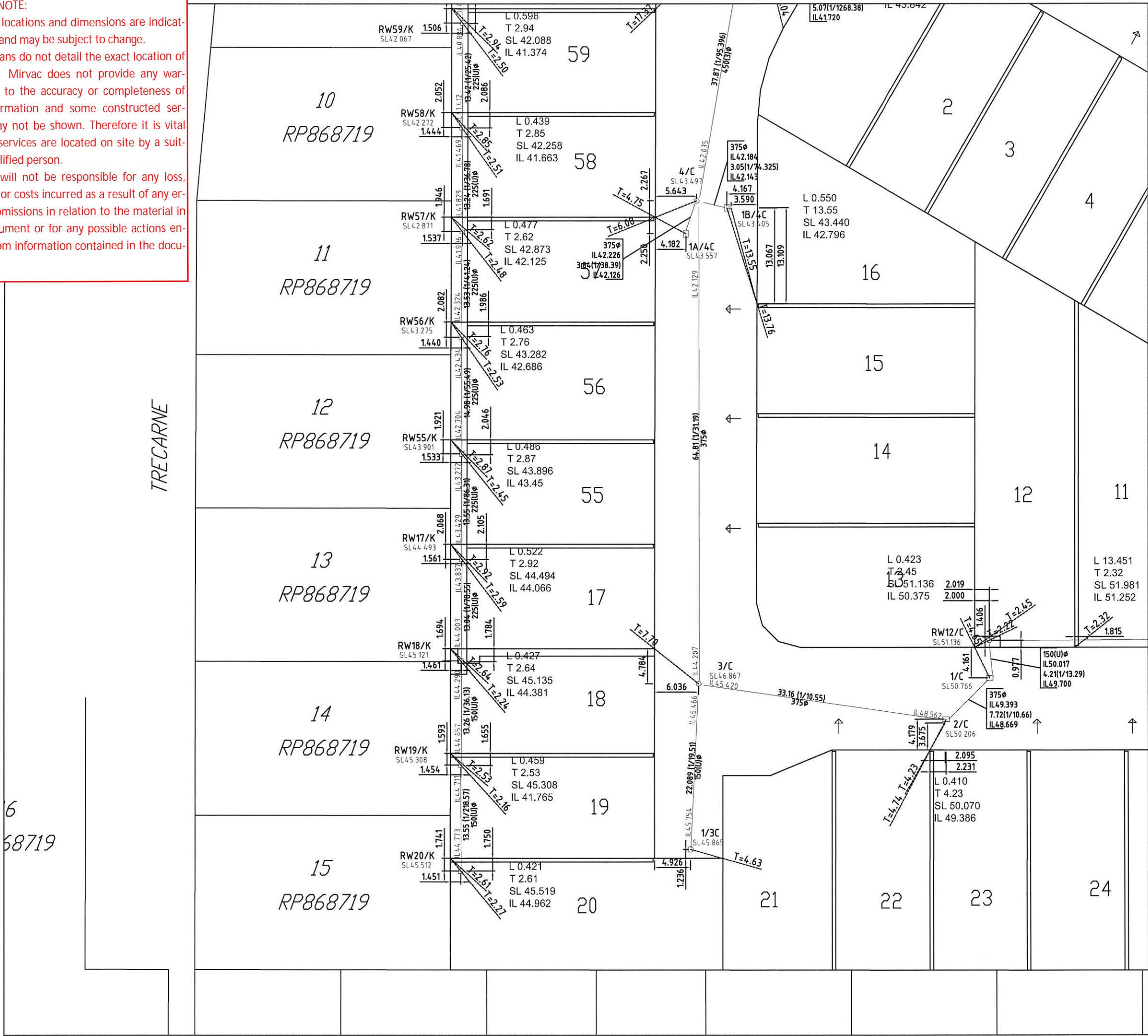
AHD DATUM

BRISBANE CITY COUNCIL

AS CONSTRUCTED STORMWATER
SUBURB : BRIDGEMAN DOWNS
FACET NO.

SURVEY	QUEENSLAND SURVEYING SOLUTIONS PTY LTD	SCALE 1:500 (A3)	NO. 2 of 4 SHEET
CHECKED		DRAWING NO.	QSS519 - 015 - A

PLEASE NOTE:
Services locations and dimensions are indicative only and may be subject to change.
These plans do not detail the exact location of services. Mirvac does not provide any warranty as to the accuracy or completeness of the information and some constructed services may not be shown. Therefore it is vital that all services are located on site by a suitably qualified person.
Mircav will not be responsible for any loss, damage or costs incurred as a result of any errors or omissions in relation to the material in this document or for any possible actions ensuing from information contained in the document.



STORMWATER RETICULATION			
NAME OF ESTATE	ASTON GROVE, STAGE 1A		
LOCATION	26 DARIEN STRET, BRIDGEMAN DOWNS		
COUNCIL FILE	A003963559		
B.C.C DELEGATES			
APPROVAL DATE			

NOTES

1. ALL STORMWATER PIPES ARE RCP CLASS 2 U.N.O
2. YEAR OF CONSTRUCTION 2015

LEGEND

- KERB ENTRY ADAPTOR
- GULLY PIT
- STORMWATER MANHOLE

ASSET REGISTER (TICK APPROPRIATE BOX)			
BCC FUNDED	DEVELOPER FUNDED		
STATE GOVT. FUNDED	FEDERAL GOVT. FUNDED		

'AS CONSTRUCTED' - SIGHTED
ASSET FUNDING INFORMATION - COMPLETED

SIGNED _____ DATE _____

CERTIFICATION OF AS-CONSTRUCTED WORKS BY CIVIL CONTRACTOR

AS THE PRINCIPAL CONTRACTOR FOR THE ABOVE CIVIL WORKS, PENSAR CONSTRUCTIONS GROUP DO CERTIFY THAT ALL CIVIL WORKS FOR THE DEVELOPMENT AT 26 DARIEN STREET, BRIDGEMAN DOWNS HAVE BEEN CONSTRUCTED UNDER THE SUPERVISION OF A PENSAR CONSTRUCTIONS GROUP REPRESENTATIVE IN ACCORDANCE WITH THE RELEVANT AUTHORITY STANDARDS, THE APPROVED CIVIL ENGINEERING PLANS AND SPECIFICATION, AND ANY ASSOCIATED APPROVED PLAN AMENDMENTS. WE CONFIRM THAT THE AS CONSTRUCTED DATA AND TESTING CERTIFICATES PROVIDED TO INTELARA INTEGRATED SOLUTIONS REPRESENT A TRUE AND ACCURATE REFLECTION OF THE WORKS COMPLETED ON SITE.

SIGNATURE: _____
NAME: **NICHOLAS SOMERVILLE**
DULY AUTHORISED ON BEHALF OF: PENSAR CONSTRUCTIONS GROUP
DATE: **30/11/15**

CERTIFICATION OF AS-CONSTRUCTED WORKS BY SURVEYOR

QUEENSLAND SURVEYING SOLUTIONS PTY LTD DO CERTIFY THAT THE AS CONSTRUCTED DATA AND PLANS PROVIDED TO PENSAR CONSTRUCTIONS GROUP (AS THE PRINCIPAL CIVIL CONTRACTOR) FOR THE DEVELOPMENT AT 26 DARIEN STREET, BRIDGEMAN DOWNS IS A TRUE AND ACCURATE REFLECTION OF THE WORKS COMPLETED ON SITE. WE CONFIRM THAT ALL DATA AND PLANS HAVE BEEN PRESENTED USING THE CORRECT DATUM AND ORIENTATION APPROPRIATE TO THE SITE IN A FORMAT AS REQUIRED BY THE RELEVANT LOCAL AUTHORITY STANDARDS.

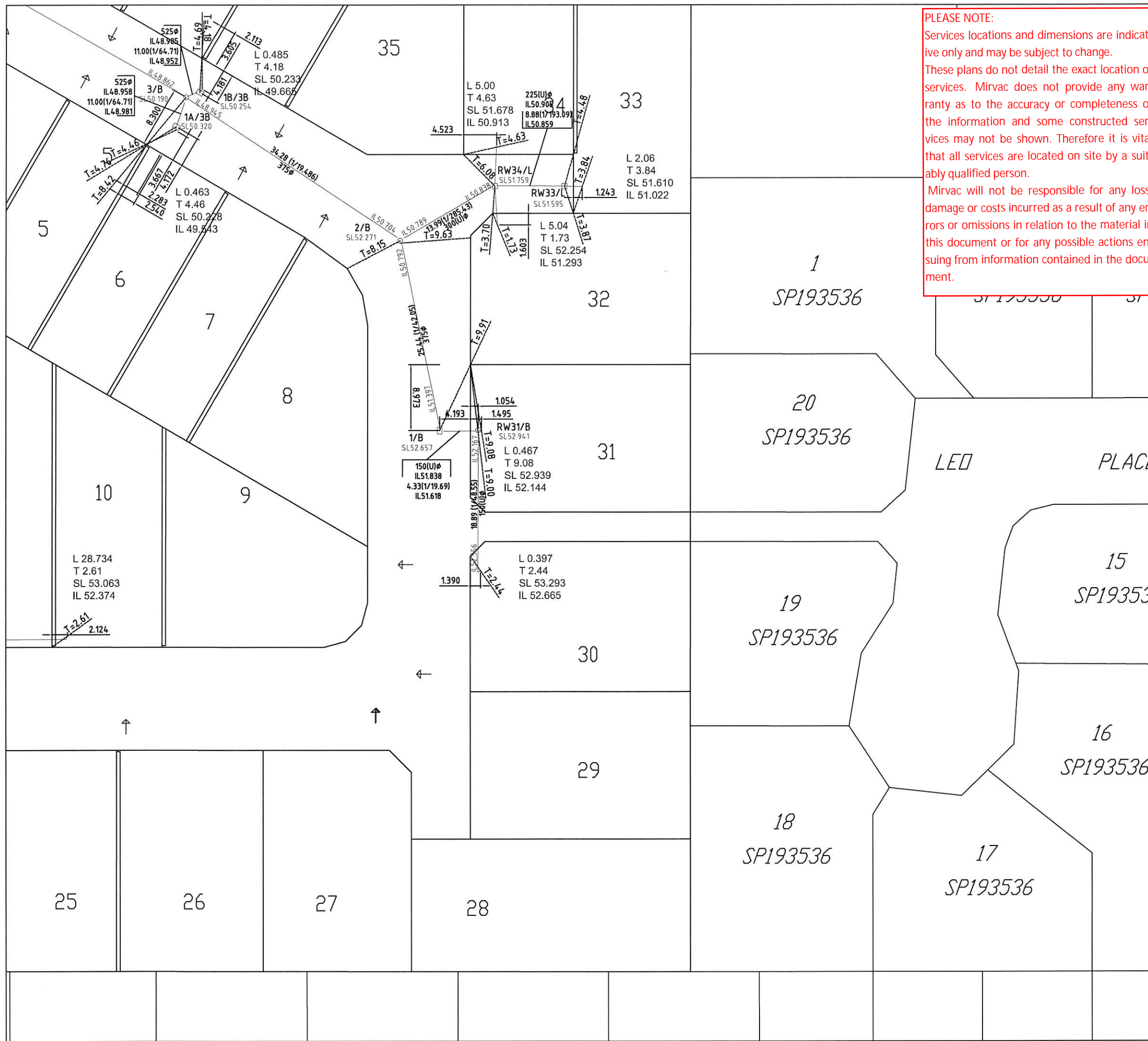
SIGNATURE: _____
NAME: JOHN DONALD O'BRIEN
DULY AUTHORISED ON BEHALF OF: QUEENSLAND SURVEYING SOLUTIONS PTY LTD
DATE: 24/11/15

AHD DATUM

BRISBANE CITY COUNCIL

AS CONSTRUCTED STORMWATER
SUBURB : BRIDGEMAN DOWNS
FACET NO.

SURVEY	QUEENSLAND SURVEYING SOLUTIONS PTY LTD	SCALE 1:500 (A3)	NO. 3 of 4 SHEET
CHECKED		DRAWING NO.	QSS519 - 015 - A



PLEASE NOTE:
Services locations and dimensions are indicative only and may be subject to change.
These plans do not detail the exact location of services. Mirvac does not provide any warranty as to the accuracy or completeness of the information and some constructed services may not be shown. Therefore it is vital that all services are located on site by a suitably qualified person.
Mircac will not be responsible for any loss, damage or costs incurred as a result of any errors or omissions in relation to the material in this document or for any possible actions ensuing from information contained in the document.

STORMWATER RETICULATION	
NAME OF ESTATE	ASTON GROVE, STAGE 1A
LOCATION	26 DARIEN STREET, BRIDGEMAN DOWNS
COUNCIL FILE	A003963559
B.C.C DELEGATES APPROVAL DATE	

NOTES
1. ALL STORMWATER PIPES ARE RCP CLASS 2 U.N.O
2. YEAR OF CONSTRUCTION 2015

LEGEND	
	KERB ENTRY ADAPTOR
	GULLY PIT
	STORMWATER MANHOLE

ASSET REGISTER (TICK APPROPRIATE BOX)	
BCC FUNDED	DEVELOPER FUNDED
STATE GOVT. FUNDED	FEDERAL GOVT. FUNDED
'AS CONSTRUCTED' - SIGHTED ASSEST FUNDING INFORMATION - COMPLETED	
SIGNED	DATE

CERTIFICATION OF AS-CONSTRUCTED WORKS BY CIVIL CONTRACTOR	
AS THE PRINCIPAL CONTRACTOR FOR THE ABOVE CIVIL WORKS,PENSAR CONSTRUCTIONS GROUP DO CERTIFY THAT ALL CIVIL WORKS FOR THE DEVELOPMENT AT 26 DARIEN STREET, BRIDGEMAN DOWNS HAVE BEEN CONSTRUCTED UNDER THE SUPERVISION OF A PENSAR CONSTRUCTIONS GROUP REPRESENTATIVE IN ACCORDANCE WITH THE RELEVANT AUTHORITY STANDARDS. THE APPROVED CIVIL ENGINEERING PLANS AND SPECIFICATION, AND ANY ASSOCIATED APPROVED PLAN AMENDMENTS. WE CONFIRM THAT THE AS CONSTRUCTED DATA AND TESTING CERTIFICATES PROVIDED TO INTELARA INTEGRATED SOLUTIONS REPRESENT A TRUE AND ACCURATE REFLECTION OF THE WORKS COMPLETED ON SITE.	
SIGNATURE :	
NAME :	NICHOLAS SOMERVILLE
DULY AUTHORISED ON BEHALF OF :	PENSAR CONSTRUCTIONS GROUP
DATE :	30/11/15

CERTIFICATION OF AS-CONSTRUCTED WORKS BY SURVEYOR	
QUEENSLAND SURVEYING SOLUTIONS PTY LTD DO CERTIFY THAT THE AS CONSTRUCTED DATA AND PLANS PROVIDED TO PENSAR CONSTRUCTIONS GROUP (AS THE PRINCIPAL CIVIL CONTRACTOR) FOR THE DEVELOPMENT AT 26 DARIEN STREET, BRIDGEMAN DOWNS IS A TRUE AND ACCURATE REFLECTION OF THE WORKS COMPLETED ON SITE. WE CONFIRM THAT ALL DATA AND PLANS HAVE BEEN PRESENTED USING THE CORRECT DATUM AND ORIENTATION APPROPRIATE TO THE SITE IN A FORMAT AS REQUIRED BY THE RELEVANT LOCAL AUTHORITY STANDARDS.	
SIGNATURE :	
NAME :	JOHN DONALD O'BRIEN
DULY AUTHORISED ON BEHALF OF :	QUEENSLAND SURVEYING SOLUTIONS PTY LTD
DATE :	24/11/15

AHD DATUM

BRISBANE CITY COUNCIL			
AS CONSTRUCTED STORMWATER SUBURB : BRIDGEMAN DOWNS FACET NO.			
SURVEY	QUEENSLAND SURVEYING SOLUTIONS PTY LTD	SCALE 1:500 (A3)	NO. 4 of 4 SHEET
CHECKED		DRAWING NO.	QSS519 - 015 - A