

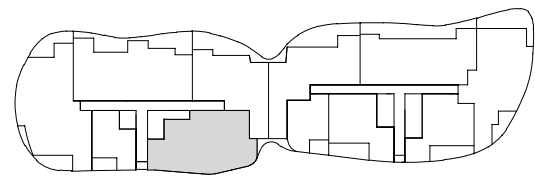
ADOR

THE PENINSULA BURSWOOD

by mirvac

Lot No. 11 / 12 Amalgamation Option
 Type 3 Bed
 Internal Area 141 m²
 External Area 18 m²
 Total Area 159 m²

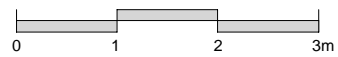
Areas subject to change in accordance with the provisions of the contract. Area includes balcony and/or terrace where applicable. It excludes associated parking and external storage areas.



BOW RIVER CRESCENT

Legend - As Applicable

- | | | |
|-----------------------------|-------------|------------|
| ▲ Access | F Fridge | K King Bed |
| △ Balcony Access | L Linen | O Oven |
| * Planter - Common Property | P Pantry | S Storage |
| ** Non Trafficable | Q Queen Bed | C Comms |
| R Robe Fitout | JN Joinery | G Grass |



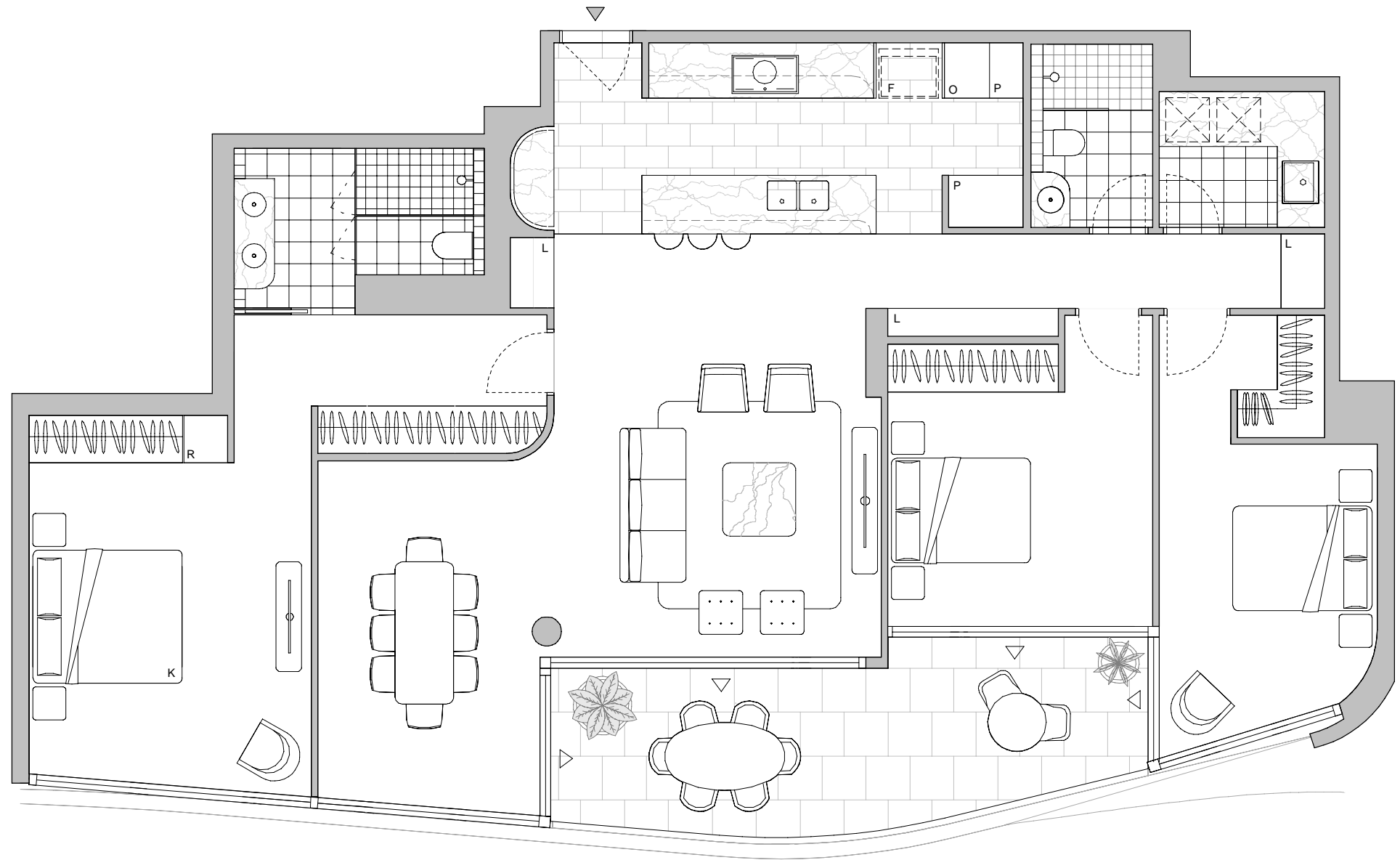
IMPORTANT NOTICE:

Note 1: This floor plan was produced prior to construction and while the information contained herein is believed to be correct it is not guaranteed. Changes will undoubtedly be made in accordance with the contract for sale. The plan does not show additional features such as hot water systems, services or Bulkheads necessary for services.

Note 2: Dimensions, areas and scale of floor plans are approximate only and subject to the terms of the Contract. Areas calculated in accordance with the Property Council of Australia Method of Measurement.

Note 3: The furniture and furnishings depicted are not included with any sale. Purchasers must refer to the contract for sale for the list of inclusions. Furnishings should not be taken to indicate the final position of power points, TV connection points and the like.

Note 4: All graphics, including design and extent of tile/paver/carpet areas, landscaping, balustrades, fencing, privacy screens, and services equipment are for illustrative purposes only and are not to be relied on as a representative of the final product. All level changes in the courtyards may not have been shown.



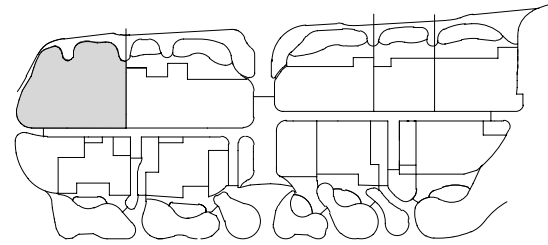
ADOR

THE PENINSULA BURSWOOD

by mirvac

Lot No. 101/102 Amalgamation
 Type 3 Bed Garden Apartment
 Internal Area 166 m²
 External Area 88 m²
 Internal Storage Area 5 m²
 Total Area 259 m²

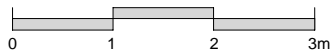
Areas subject to change in accordance with the provisions of the contract. Area includes balcony and/or terrace where applicable. It excludes associated parking and external storage areas.



BOW RIVER CRESCENT

Legend - As Applicable

- | | | |
|-----------------------------|-------------|------------|
| ▲ Access | F Fridge | K King Bed |
| △ Balcony Access | L Linen | O Oven |
| * Planter - Common Property | P Pantry | S Storage |
| ** Non Trafficable | Q Queen Bed | C Comms |
| R Robe Fitout | JN Joinery | G Grass |



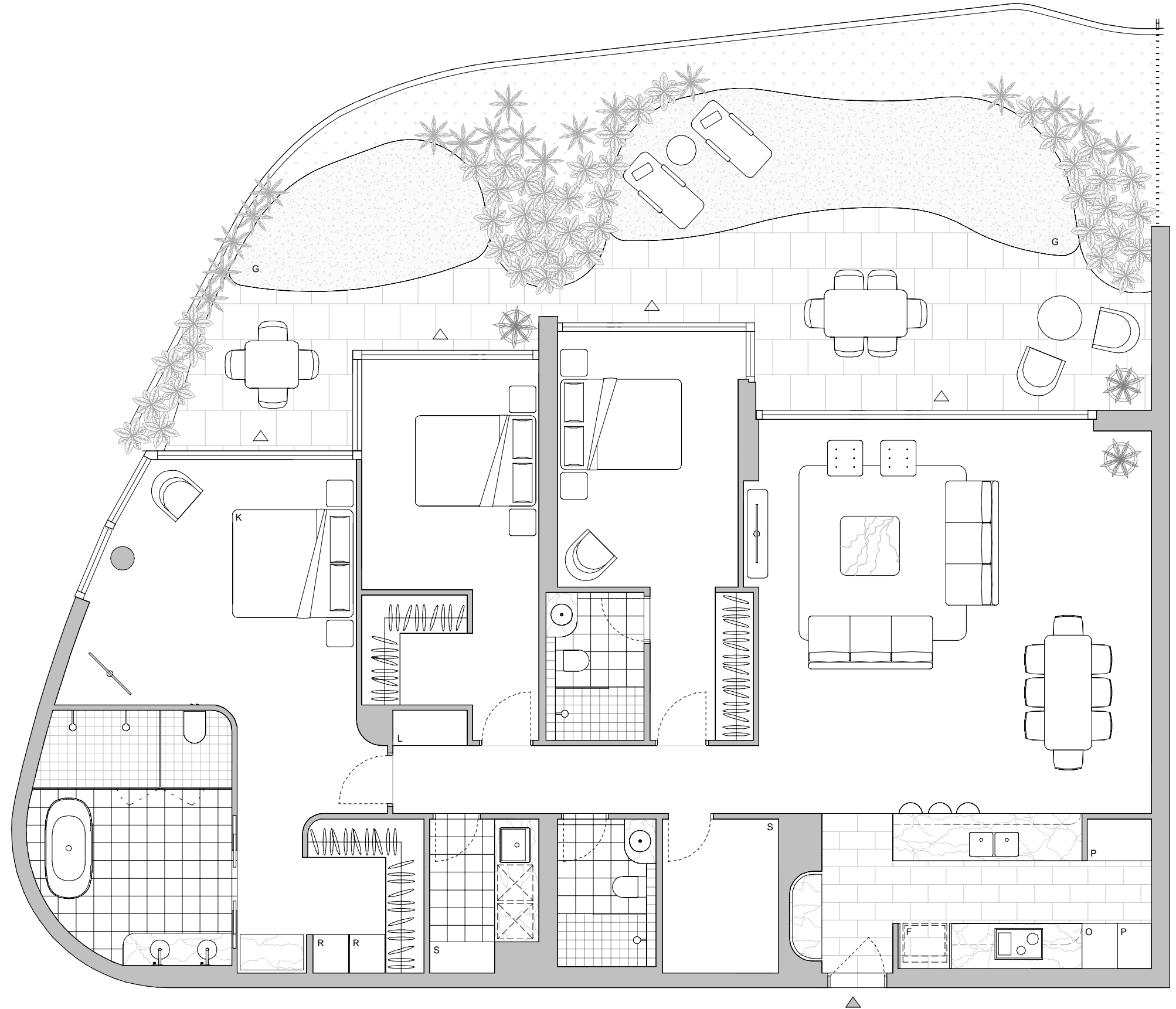
IMPORTANT NOTICE:

Note 1: This floor plan was produced prior to construction and while the information contained herein is believed to be correct it is not guaranteed. Changes will undoubtedly be made in accordance with the contract for sale. The plan does not show additional features such as hot water systems, services or Bulkheads necessary for services.

Note 2: Dimensions, areas and scale of floor plans are approximate only and subject to the terms of the Contract. Areas calculated in accordance with the Property Council of Australia Method of Measurement.

Note 3: The furniture and furnishings depicted are not included with any sale. Purchasers must refer to the contract for sale for the list of inclusions. Furnishings should not be taken to indicate the final position of power points, TV connection points and the like.

Note 4: All graphics, including design and extent of tile/paver/carpet areas, landscaping, balustrades, fencing, privacy screens, and services equipment are for illustrative purposes only and are not to be relied on as a representative of the final product. All level changes in the courtyards may not have been shown.



ADOR

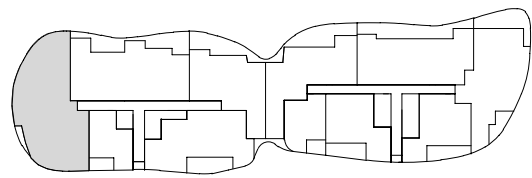
THE PENINSULA BURSWOOD

by mirvac

Lot No. 01 / 14 Amalgamation Option
Type 3 Bed Dual Living

Internal Area 189 m²
External Area 32 m²
Total Area 221 m²

Areas subject to change in accordance with the provisions of the contract. Area includes balcony and/or terrace where applicable. It excludes associated parking and external storage areas.



BOW RIVER CRESCENT

Legend - As Applicable

- | | | |
|-----------------------------|-------------|------------|
| ▲ Access | F Fridge | K King Bed |
| △ Balcony Access | L Linen | O Oven |
| * Planter - Common Property | P Pantry | S Storage |
| ** Non Trafficable | Q Queen Bed | C Comms |
| R Robe Fitout | JN Joinery | G Grass |



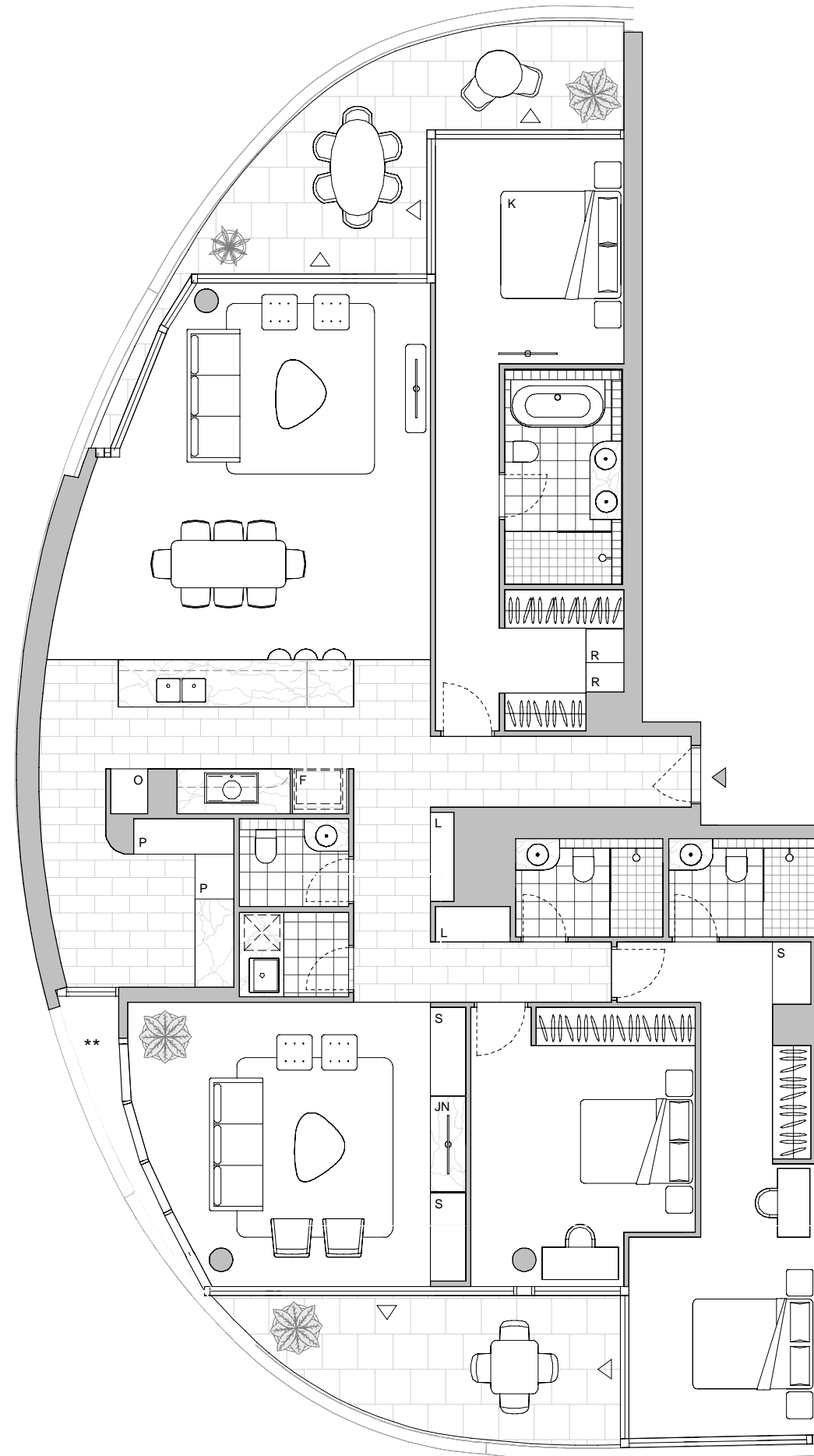
IMPORTANT NOTICE:

Note 1: This floor plan was produced prior to construction and while the information contained herein is believed to be correct it is not guaranteed. Changes will undoubtedly be made in accordance with the contract for sale. The plan does not show additional features such as hot water systems, services or Bulkheads necessary for services.

Note 2: Dimensions, areas and scale of floor plans are approximate only and subject to the terms of the Contract. Areas calculated in accordance with the Property Council of Australia Method of Measurement.

Note 3: The furniture and furnishings depicted are not included with any sale. Purchasers must refer to the contract for sale for the list of inclusions. Furnishings should not be taken to indicate the final position of power points, TV connection points and the like.

Note 4: All graphics, including design and extent of tile/paver/carpet areas, landscaping, balustrades, fencing, privacy screens, and services equipment are for illustrative purposes only and are not to be relied on as a representative of the final product. All level changes in the courtyards may not have been shown.



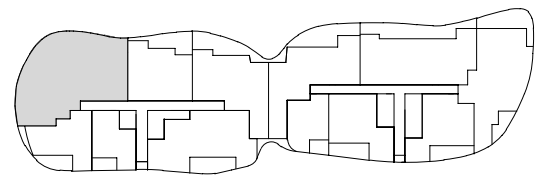
ADOR

THE PENINSULA BURSOOD

by mirvac

Lot No. 501 / 502 Amalgamation Option
 Type 4 Bed
 Internal Area 195 m²
 External Area 40 m²
 Total Area 235 m²

Areas subject to change in accordance with the provisions of the contract. Area includes balcony and/or terrace where applicable. It excludes associated parking and external storage areas.



BOW RIVER CRESCENT

Legend - As Applicable

- | | | |
|-----------------------------|-------------|------------|
| ▲ Access | F Fridge | K King Bed |
| △ Balcony Access | L Linen | O Oven |
| * Planter - Common Property | P Pantry | S Storage |
| ** Non Trafficable | Q Queen Bed | C Comms |
| R Robe Fitout | JN Joinery | G Grass |



IMPORTANT NOTICE:

Note 1: This floor plan was produced prior to construction and while the information contained herein is believed to be correct it is not guaranteed. Changes will undoubtedly be made in accordance with the contract for sale. The plan does not show additional features such as hot water systems, services or Bulkheads necessary for services.

Note 2: Dimensions, areas and scale of floor plans are approximate only and subject to the terms of the Contract. Areas calculated in accordance with the Property Council of Australia Method of Measurement.

Note 3: The furniture and furnishings depicted are not included with any sale. Purchasers must refer to the contract for sale for the list of inclusions. Furnishings should not be taken to indicate the final position of power points, TV connection points and the like.

Note 4: All graphics, including design and extent of tile/paver/carpet areas, landscaping, balustrades, fencing, privacy screens, and services equipment are for illustrative purposes only and are not to be relied on as a representative of the final product. All level changes in the courtyards may not have been shown.

