



Issued under the Environmental Planning and Assessment Act 1979

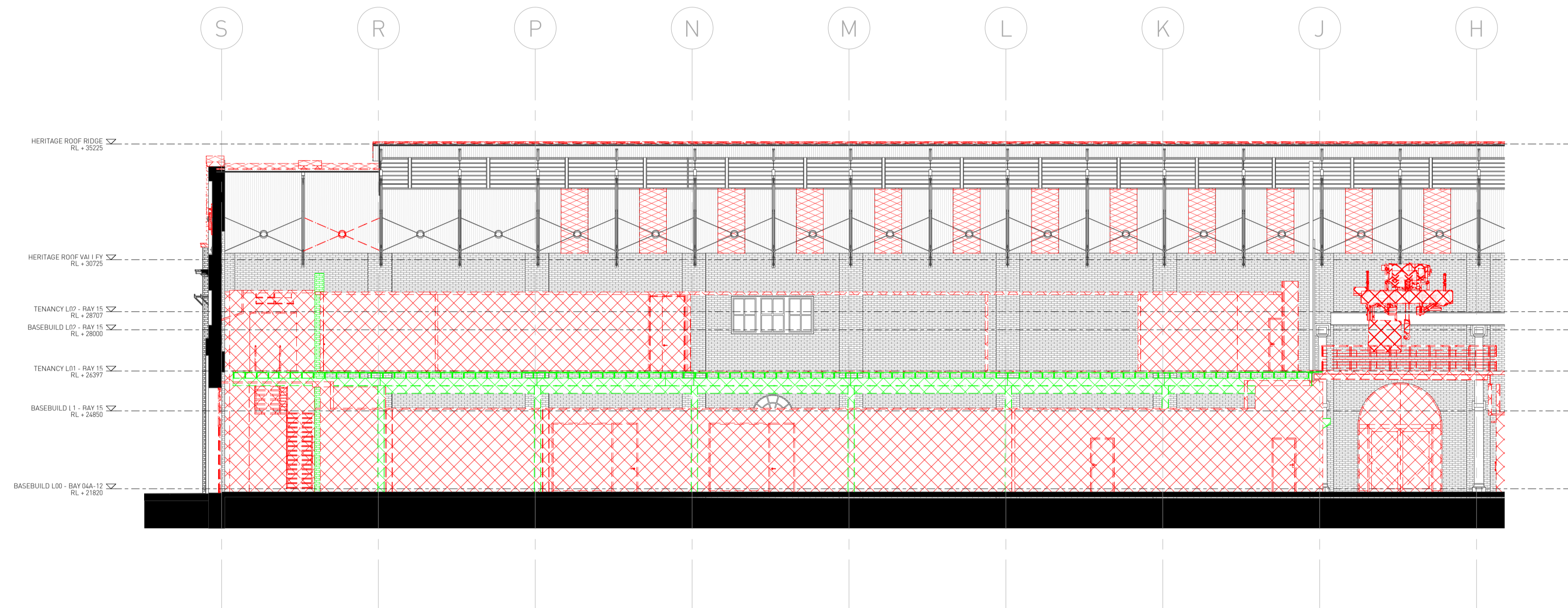
Approved Section 4.55 (.....1A.....) Modification Application

No. 11 Granted on 12/02/2021

In respect to SSD 8449

Signed CP

Sheet No. 4 of 4



1 DEMOLITION SECTION - BAY 15 SOUTH
1 : 125

FOR INFORMATION

Architect
SISSONS ARCHITECTS
Suite 5.01, 53 Berry Street
North Sydney NSW 2060
Australia
Tel: +61 2 8904 1853
ABN: 31 621 375 129
www.sissonsarchitects.com

GRAPHIC LEGEND	
	Items to be demolished
	Items to be retained and relocated
	Roof sheeting to be upgraded
	Bay 15 timber platform to be removed

Client MIRVAC		North
Scale As indicated @A1 (Half Scale @ A3)	Rev Date 26/11/20	

Project LOCOMOTIVE WORKSHOP 2 Locomotive St, Eveleigh NSW 2015	
--	--

Drawing Title BAY 15 SOUTH TIMBER PLATFORM - DEMOLITION SECTION		
Project No. 16-002	Drawing No. SK_0943	Rev A