

# INDICATIVE POTABLE, RECYCLED AND WASTE WATER SERVICES STAGING PLAN - MOD 2

25/10/22

**LEGEND**

**LEAD IN INFRASTRUCTURE**

**POTABLE WATER**  
 CONNECT TO EXISTING WATERMAIN AND UPSIZE

**RECYCLED WATER**  
 CONNECT TO PROPOSED RECYCLED WATERMAIN (BY SWC)

**WASTE WATER**  
 INTERIM CONNECTION TO PROPOSED INTERIM OPERATING PLANT (BY SWC) UNTIL SUCH TIME SPS IS COMMISSIONED

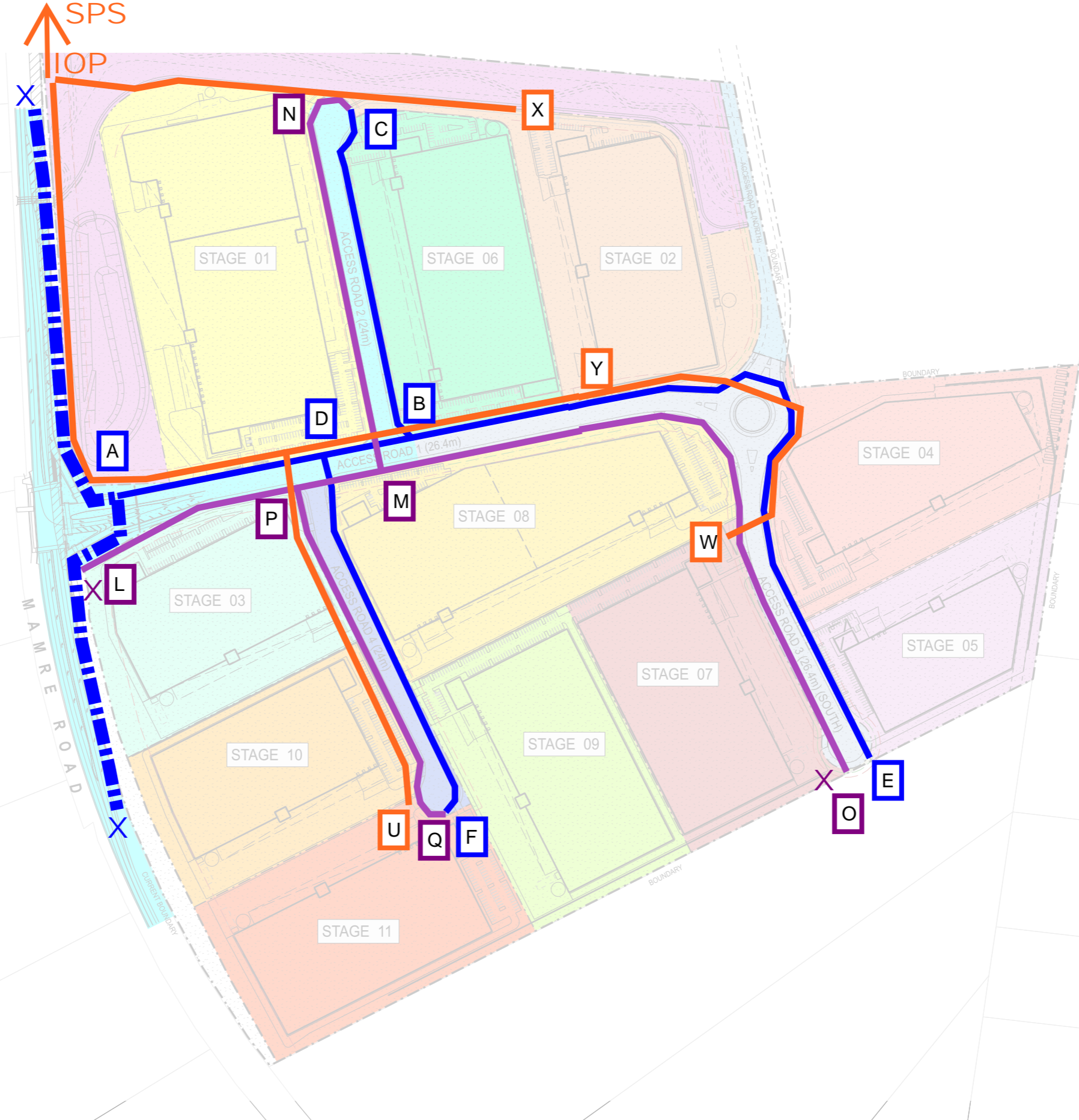
**WASTE WATER**  
 ULTIMATE CONNECT TO PROPOSED SEWER PUMP STATION (BY SWC)

**INTERNAL RETICULATION**

**POTABLE WATER**  
 STAGE 1 - A to B  
 STAGE 2 - B to C  
 STAGE 3 - B to E  
 STAGE 4 - D to F

**RECYCLED WATER**  
 STAGE 1 - L to M  
 STAGE 2 - M to N  
 STAGE 3 - M to O  
 STAGE 4 - P to Q

**WASTE WATER**  
 STAGE 1 - Y to Z  
 STAGE 2 - X to Z  
 STAGE 3 - W to Y  
 STAGE 4 - U to V



**LEGEND**

- Stage 01 Riparian Realignment & Basin Infrastructure Works
- Stage 01 - Phase 01 Road Infrastructure Works
- Stage 01 - Phase 01 Bulk Earthworks
- Stage 01 - Phase 02 Road Infrastructure Works
- Stage 01 - Phase 03 Road Infrastructure Works
- Stage 02 Road Infrastructure Works
- Stage 01 Building Works
- Stage 02 Building Works
- Stage 03 Building Works
- Stage 04 Building Works
- Stage 05 Building Works
- Stage 06 Building Works
- Stage 07 Building Works
- Stage 08 Building Works
- Stage 09 Building Works
- Stage 10 Building Works
- Stage 11 Building Works