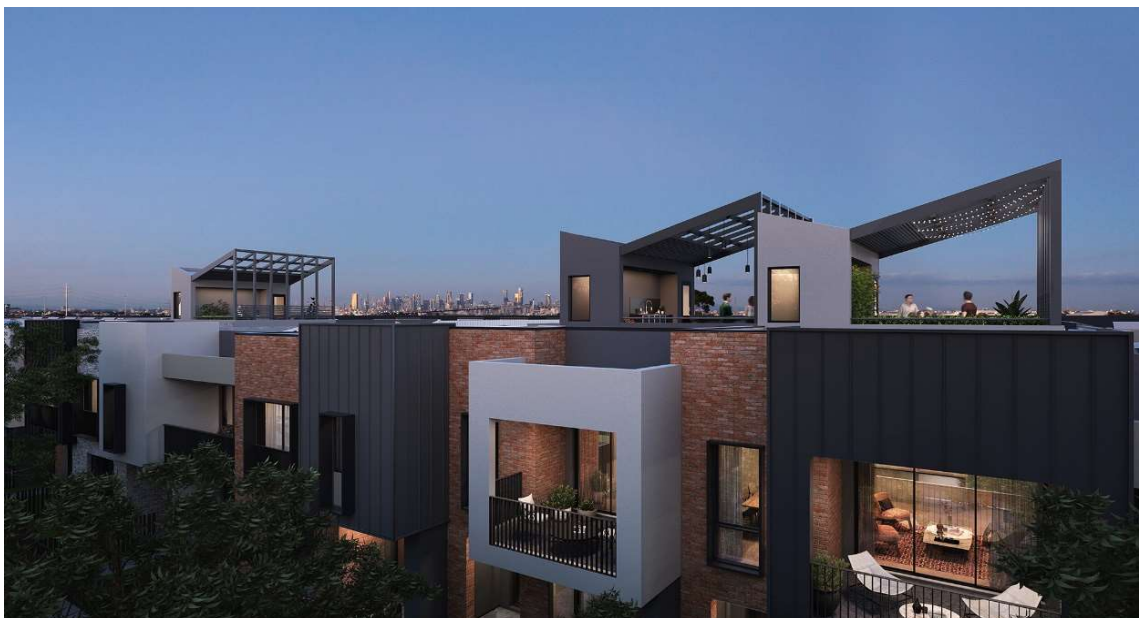


Residential Development Victoria

THE FABRIC, BLACKSHAW'S ROAD ALTONA NORTH, VIC



The Fabric is an 11.4-hectare urban infill site located in Altona North, 9 kilometres west of Melbourne's CBD. The masterplan comprises a total of over 550 dwellings offering 2, 3 and 4-bedroom townhouses and mid-rise apartments. The Fabric townhouses achieve a strong, contemporary architectural style and deliver sustainable outcomes for future residents with all townhouses achieving a 7-star energy rating and provisioned with solar panels and fully electric appliances. Over one hectare of public open space will be delivered, including a main local park, a pocket park and linear trails linking green areas throughout the development.

Summary Information - In Progress

ACQUISITION/AGREEMENT DATE	Jul-20
LOCATION	Altona North
PROJECT VALUE (INCL. GST)	\$422.0m
TOTAL LOTS ¹	573
RESIDENTIAL LOTS SETTLEMENT PERIOD	FY22-FY28
OWNERSHIP STRUCTURE	100% Mirvac

1. Indicative only and subject to change. Final lot number will depend on planning outcomes, development and construction decisions as well as market demand and conditions, including COVID-19 uncertainties.