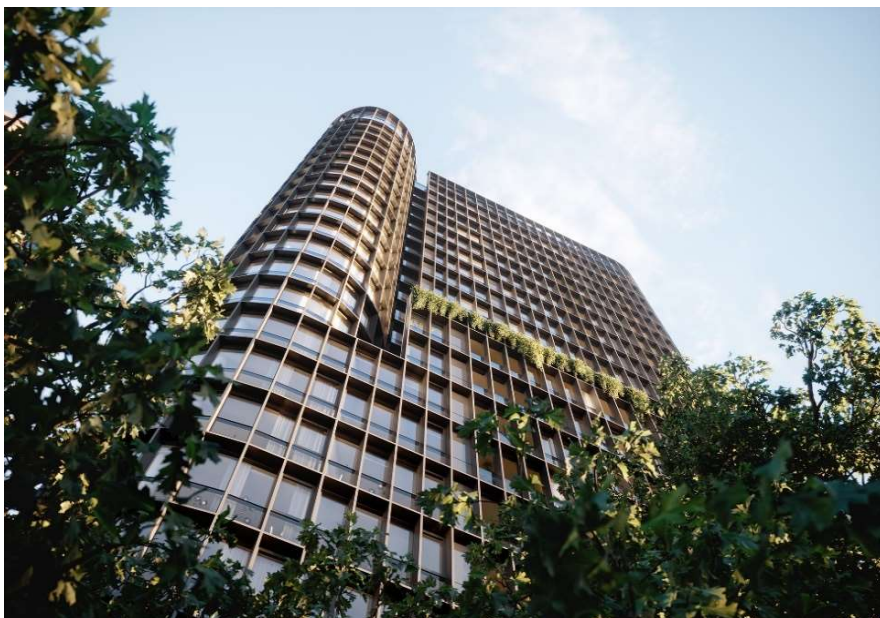


## Residential Development

# New South Wales

### GREEN SQUARE, BOTANY ROAD ZETLAND, NSW



Green Square is a mixed-use development located just over four kilometres south of Sydney's CBD and approximately four kilometres from Sydney airport, and is conveniently located near the Green Square train station. The Green Square precinct is one of the largest urban renewal projects in Australia and when complete, this development will aim to deliver over 1,600 apartments, along with office and retail space and a substantial public domain within the Green Square Town Centre. In 2020, Mirvac acquired Landcom's ownership of the future stages of Green Square Town Centre, including future apartments, commercial and retail space.

#### Summary Information - In Progress

ACQUISITION/AGREEMENT DATE	Mar-12
LOCATION	Zetland
PROJECT VALUE (INCL. GST)	\$2,009.3m
TOTAL LOTS <sup>1</sup>	1,612 <sup>2</sup>
RESIDENTIAL LOTS SETTLEMENT PERIOD	FY17-FY28
OWNERSHIP STRUCTURE	PDA with Landcom / 100% Mirvac

1. Indicative only and subject to change. Final lot number will depend on planning outcomes, development and construction decisions as well as market demand and conditions, including COVID-19 uncertainties.

2. Includes retail lots.